

City of Richmond

Child Care Needs Assessment and Strategy

2022 Update



Community Social Development Department



Contents

Introduction.....	2
About the Strategy.....	3
Implementation Priorities.....	4
Federal and Provincial Child Care Initiatives	5
Federal Government Initiatives.....	5
Provincial Government Initiatives.....	6
Status of Child Care in Richmond.....	9
2021–2031 Richmond Child Care Action Plan.....	9
City of Richmond’s New Child Care Spaces	9
Richmond School District Child Care Initiatives.....	10
Richmond’s Child Care Inventory.....	10
2021–2031 Richmond Child Care Action Plan Targets.....	15
Progress.....	16
2022 Significant Achievements.....	16
Strategic Direction #1: Policy and Planning.....	17
Strategic Direction #2: Creating and Supporting Spaces.....	18
Strategic Direction #3: Advocacy.....	19
Strategic Direction #4: Accessibility and Inclusion.....	20
Strategic Direction #5: Collaboration and Partnership.....	21
Strategic Direction #6: Research, Promotion and Marketing	22
Strategic Direction #7: Monitoring and Renewal	23
Next Steps.....	24
Conclusion.....	25
Appendix A.....	26

Introduction



The *2017–2022 Richmond Child Care Needs Assessment and Strategy* (the Strategy) has provided a framework for ongoing, short and long term actions during its five year lifespan. Since the inception of the *2017–2022 Richmond Child Care Needs Assessment and Strategy*, the City of Richmond has made considerable progress in supporting the development of a comprehensive child care system in Richmond and has built upon the achievements over the last 30 years. This progress has been well documented through progress updates of the Strategy over the past five years. The City recognizes the importance of access to affordable and quality child care facilities for Richmond’s resident and employee populations and the impact this has on the vitality of Richmond’s economy. The City of Richmond continues to be a municipal leader in its commitment to support child care spaces in Richmond.

The City of Richmond demonstrates a strong commitment to delivering and supporting the expansion and creation of new child care facilities through its partnerships with other levels of government and both the private and non-profit sectors. The City makes a commitment to child care within the Official Community Plan and by securing child care amenity contributions, rezoning contributions and density bonuses during the development process. The City also demonstrates commitments through the allocation of staffing resources and development of strategies and plans focused on this important community service.

Through regular ongoing analysis of data, tracking changes in child care spaces, public engagement efforts and annual progress updates, the City of Richmond is well positioned to make informed and effective progress to build on its ongoing child care commitments. The ongoing collaborative work with community partners, including the Richmond School District, Community Associations and Societies, multi-service agencies who support families and child care operators, remains critical to integrate and advance an accessible, affordable and quality child care system in Richmond.

The City’s role is to provide leadership in creating and nurturing child care in Richmond as this is important to the liveability and economy of the city. The City currently owns thirteen purpose-built child care facilities including two innovative, state-of-the-art Early Childhood Development Hubs. The thirteenth facility, Hummingbird Child Care Centre, has been recently completed and is due to commence operations in 2023. These facilities provide approximately 620 licensed child care spaces for families in Richmond.

There has been significant progress since the *2017–2022 Richmond Child Care Needs Assessment and Strategy* was adopted in 2017. Since its adoption, achievements from the first four years of the *2017–2022 Richmond Child Care Needs Assessment and Strategy* are outlined in the *2018, 2019, 2020 and 2021 Updates*. This report is the final progress update to the Strategy and provides a summary of the accomplishments and initiatives the City and the community have taken in 2022 to address the strategic directions and actions contained within the *2017–2022 Child Care Needs Assessment and Strategy*.

About the Strategy

The *2017–2022 Richmond Child Care Needs Assessment and Strategy* was adopted by City Council on July 24, 2017. It is the fourth child care needs assessment undertaken by the City since 1995 and provides insight into the status of child care in Richmond. This five-year Strategy for the City outlines steps to support the development of a healthy child care system in the community and guides the City’s actions. In addition, it recommends that the City and other key stakeholders work together to address the need for quality, affordable and accessible child care spaces in Richmond.

The City of Richmond’s first municipal child care strategy was created in 1991. The vision for the current five-year strategy is for the City to build on three decades of work to continue to support the development and expansion of a child care system in Richmond. The *2017–2022 Richmond Child Care Needs Assessment and Strategy* involved a comprehensive review and analysis of the child care landscape in Richmond. It was developed with participation from the public and child care operators through focus groups and surveys, as well as engagement with key stakeholders. The award-winning strategy was commended for being outcome-based with short-term and long-term actions. Its commitment to inclusiveness and representing the needs of Richmond’s diverse community was also significant.

The Strategy identifies emerging trends in early child development and early learning including securing Early Childhood Development Hubs with co-located child care and family support services, and the importance of multilingual community engagement. It is recognized as a high-quality resource among other municipalities and the City has established itself as a leader in the development of child care planning and the creation of community child care spaces.



Implementation Priorities

In the 2017–2022 *Richmond Child Care Needs Assessment and Strategy*, seven strategic directions and 32 recommended actions address the current and future needs related to child care in Richmond. The seven strategic directions are:

- 1 Strategic Direction #1:** Policy and Planning
- 2 Strategic Direction #2:** Creating and Supporting Spaces
- 3 Strategic Direction #3:** Advocacy
- 4 Strategic Direction #4:** Accessibility and Inclusion
- 5 Strategic Direction #5:** Collaboration and Partnership
- 6 Strategic Direction #6:** Research, Promotion and Marketing
- 7 Strategic Direction #7:** Monitoring and Renewal

These strategic directions have guided the City's priorities since 2017. The 2022 *Update* report is the final update to the 2017–2022 *Child Care Needs Assessment and Strategy* and a new strategy will be prepared, which will cover the next ten year period. The new strategy will be informed by the Canadian 2021 Census data and will provide a continued focus and direction for quality, affordable and accessible child care in Richmond over the next decade.



Federal and Provincial Child Care Initiatives

Federal Government Initiatives

Early Learning and Child Care Agreement

In 2022, the Federal Government continued to provide funding to the Province of British Columbia to fulfill the significant commitments made through the 2021 Early Learning and Child Care Agreement between the Governments of Canada and BC. This agreement includes an investment of \$3.2 billion by the Government of Canada between 2021 and 2026 to help improve regulated early learning and child care for children under 6 years in BC. Furthermore, the Federal Budget for 2022 proposes to provide \$625 million over four years beginning in 2023–2024 to Employment and Social Development Canada for the Child Care Infrastructure Fund to support the further implementation of the Canada-wide early learning and child care system. This funding will allow provinces and territories, including BC, to make additional child care investments to deliver new facilities and create new child care spaces.

The Early Learning and Child Care Agreement specifically supports the following outcomes for BC:

- A 50% reduction in average parent fees by the end of 2022;
- An average parent fee of \$10 per day for regulated child care spaces for children under 6 years by 2026;
- The creation of 30,000 regulated early learning and child care spaces for children under the age of 6 years by 2026 and a total of 40,000 spaces within seven years;
- Support for early childhood educators through the creation of a wage grid; and
- The creation of an Implementation Committee to monitor the progress on child care commitments.

In November 2022, the Minister of Families, Children and Social Development announced the appointed members of the newly created National Advisory Council on Early Learning and Child Care. The mandate for this group is to provide a forum for consultation and third party expert advice to the Federal Government. The Council is comprised of 16 members from across Canada and includes parents, child care providers, academics and advocates, and will advise the Federal Government on challenges related to the early learning and child care sector.

On December 8, 2022, the Federal Government introduced Bill C-35 the Canada Early Learning and Child Care Act which sets out the Government of Canada's vision for a Canada-wide early learning and child care system and enshrines in legislation the government's commitment to maintaining long-term funding





relating to early learning and childcare. This funding will, in turn, be provided to the provinces and Indigenous peoples. This act also formalizes the National Advisory Council on Early Learning and Child Care established in November 2022.

The Government of Canada has worked closely with the Provincial Government to improve access to quality, affordable, flexible and inclusive early learning and child care programs and services.

Provincial Government Initiatives

The 2022 Province of BC Speech from the Throne included the government's continued intention to prioritize efforts to make everyday life more affordable for British Columbians and to ensure current and future economic growth in the Province is sustainable. In addition, an ongoing commitment was made to the ChildCareBC Plan, which was originally launched in 2018. The ChildCareBC Plan was implemented to better unite and coordinate a range of individual programs and services to more effectively and efficiently provide core operating funding for child care providers and to reduce child care fees for parents. The ChildCareBC Plan is the platform through which the investments and partnerships between the Government of Canada and the Province of BC are implemented.

A number of historic changes were realized in 2022, including a change to the primary Ministry responsible for child care. As part of a desire to bring more certainty and reliability to child care, the responsibility of child care moved from the Ministry of Child and Family Development to the newly renamed Ministry of Education and Child Care. This transition took place in April 2022. The Minister of State for Child Care, public service staff, the budget and the legislative authority for child care all moved to the Ministry of Education and Child Care in response to advice from the child care sector and as outlined in the ChildCareBC Plan. This aligns with approaches taken in other provinces and territories.

In addition, as of December 1, 2022, the Province of BC achieved its goal to cut child care fees in half, on average, across BC. This was achieved through enhancements to the Child Care Fee Reduction Initiative and expansion of the \$10 a Day Funding Program.

Ministry of Education and Child Care Initiatives

In addition to the historic change of moving child care to this newly renamed Ministry, progress has continued towards implementation of a number of key priorities and programs. These include continued support to child care providers in response to the COVID-19 pandemic, enhanced support to Early Childhood Educators, modifications to the capital funding to create new child care spaces, expansion of the \$10 a Day model of child care and further reductions in child care fees.

COVID-19 Health and Safety Guidance and Support

On January 20, 2022, the Minister of State for Child Care, announced updated COVID-19 health and safety guidance for child care settings. The COVID-19 Public Health Guidance for Child Care Settings was updated by the BC Centre

for Disease Control and provided new guidance related to children’s self-isolation and reiterated child care facilities as essential services. The Province also distributed 250,000 rapid antigen tests to child care providers throughout BC who receive Child Care Operating Funding or \$10 a Day ChildCareBC funding.

Additional health and safety funding for child care providers through the 2022 Health and Safety Grant was announced on February 7, 2022. The Province invested \$20 million in grants to support licensed child care providers with the additional costs of cleaning, supplies or staffing that arise due to the ongoing impact of the COVID-19 pandemic. Eligible licensed child care providers received a one-time grant of \$160 per child care space in February 2022.



Supports to Early Childhood Educators

On February 18, 2022, the Province of BC announced additional funding programs to support Early Childhood Educator training, recruitment and retention in BC. The programs are part of the StrongerBC Economic Plan and are supported by the allocation of \$49.2 million of funding provided through the Canada-British Columbia Early Learning and Child Care Agreement, which was signed in 2021.

Updates to New Spaces Capital Funding Program

The provincial ChildCareBC New Spaces Fund announced key program updates for 2022 in order to increase the number of quality, inclusive community-based child care facilities in areas of the greatest need. The call for applications for the new round of New Spaces funding opened in May 2022 and will close when the funding runs out.

The key changes for 2022 include:

- The removal of maximum provincial funding amounts to support the delivery of larger space projects but prioritising projects with a cost per space of \$40,000 or less;
- An increased priority for schemes delivering infant/toddler child care spaces;
- A new application stream for BC School Boards, First Nation Schools, First Nation Independent Schools and eligible independent schools creating new School-age Care on School Grounds;
- Added eligibility for the funding of consulting services up to 12 months prior to entering a Funding Agreement; and
- A new requirement for projects to include a 10% contingency fund.

In the first three years of ChildCareBC, more than 30,500 new licensed child care spaces for children aged 0–12 years have been introduced in BC. Of these new spaces, 1,405 spaces are located in Richmond.

Expanded \$10 a Day Child Care Spaces

In 2018, the Province began funding \$10 a Day ChildCareBC sites under a prototype model where more than fifty \$10 a Day ChildCareBC centres were approved for operation. In 2021, the Province committed to convert over 4,000 additional spaces

to \$10 a Day ChildCareBC Spaces for families and as of December 2022, with funding from the updated Early Learning and Child Care (ELCC), there are now 10,500 \$10 a Day ChildCareBC spaces in the Province. Additional spaces are being negotiated between the Province and child care operators and are expected to be implemented in early 2023. As of December 1, 2022 there are thirteen facilities in Richmond enrolled in this program and currently offering \$10 a Day child care to families. Seven of these thirteen facilities are owned by the City of Richmond and leased to non-profit providers in the community. They currently provide 245 spaces of licensed child care.

Reductions in Child Care Fees

In 2018, as part of the ChildCareBC Plan, the provincial government introduced the Fee Reduction Initiative. This program provides direct funding to eligible, licensed child care providers to enable them to reduce child care fees for families. Initially this program resulted in reductions of up to \$350 per month for families of children attending licensed group child care programs for children under the age of three years and has been expanded in 2022 to result in reductions of up to \$900 per month. Reductions of up to \$100 per month for children aged 3–5 years, including those in kindergarten were expanded to a maximum reduction of \$545 per month depending on the type of child care used. As this funding is provided directly to child care providers, families are not required to apply for the fee reduction and it is not income tested. The program also includes administrative funding for providers to reflect additional paperwork involved in participation.

The increases to the Fee Reduction Initiative, announced on September 23, 2022 and effective December 1, 2022, will increase the amount of funding to child care providers and result in lower child care fees for families. This program now includes child care providers representing 96% of the licensed child care spaces eligible for the program across the province. Child care providers who are enrolled in the Fee Reduction Initiative are required to maintain their current child care fees in order to ensure that families directly benefit from the reductions. These significant fee reductions will increase the affordability of licensed child care in Richmond and across the province.



Status of Child Care in Richmond



2021–2031 Richmond Child Care Action Plan

The *2021–2031 Richmond Child Care Action Plan* (the Plan), which was adopted by City Council on April 12, 2021, offers valuable insight on municipal initiatives and outlines a concrete framework to expand and enhance child care choices in Richmond. The Plan builds on and complements the *2017–2022 Richmond Child Care Needs Assessment and Strategy*. Through research and consultation, the Plan provides a snapshot of the current state of child care in Richmond and assesses the opportunities and challenges to better meet the child care needs of families.

The *2021–2031 Richmond Child Care Action Plan* proposes child care space creation targets to address these needs:

- A net increase of 3,688 spaces by 2031 to achieve targets in relation to the projected population of:
 - 25 spaces per 100 children under 36 months;
 - 55 spaces per 100 children aged 30 months to school age; and
 - 25 spaces per 100 school-age children.
- Child care spaces for school-age children that are on-site or within walking distance for all elementary schools in Richmond, both public and independent, by 2031.
- A focus on three areas of flexible, licensed child care to meet the needs of families who require part-time or intermittent child care or who seek care during non-traditional hours due to employment.

The Plan outlines a total of 35 actions for further exploration and implementation in order to create additional child care spaces in Richmond over the next ten years. These actions combined form a framework to further support the development of additional child care spaces in Richmond in City-owned, non-profit and private facilities. Outcomes from these actions will also support an increase in quality child care options for families while contributing to a stronger and more sustainable system of early learning and care.

City of Richmond's New Child Care Spaces

In 2022, the City of Richmond took ownership of the recently completed Hummingbird Child Care Centre, which provides 37 new child care spaces in a high quality, new facility. This facility adds to the existing 12 City-owned dedicated child care facilities in operation and provides a combined total of 620 licensed child care spaces in City-owned child care facilities.

The operation of the two Early Childhood and Development Hubs (ECDH); Seedlings and Sprouts, which commenced in 2022, and the completion of the new Hummingbird Child Care Centre this year are significant achievements, and



the result of the City of Richmond’s commitment to delivering high quality and innovative child care facilities for the city.

Richmond School District Child Care Initiatives

The Richmond School District has made considerable progress to support the provision of child care for families in Richmond. The Long-Range Facilities Plan, which was adopted on June 26, 2019 and updated in November 2021, included several strategic recommendations that pertain to child care and early learning. The recommendations include the identification of opportunities to create new permanent child care spaces when implementing seismic upgrades to schools.

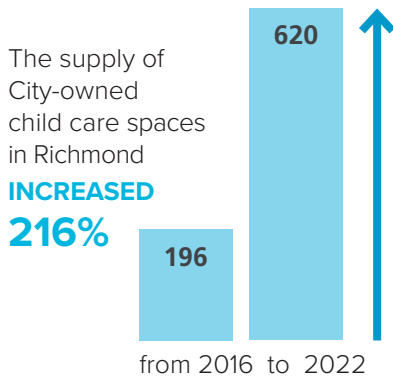
The School District has accessed the Province of BC’s ChildCareBC Funding Programs to create new child care facilities at F.A. Tomsett Elementary, Robert J. Tait Elementary, Manoh Steves Elementary School and Maple Lane Elementary School and are continuing to review suitable sites for new opportunities to create more child care spaces.

In addition to full day child care spaces, Richmond School District also operates two Just B4 licensed preschool programs for 4 and 5 year old children located at Walter Lee Elementary and R.M. Grauer Elementary. Staff from the City of Richmond and Richmond School District continue to work together and collaborate around opportunities to increase child care spaces at, or in close proximity to, schools.

Richmond’s Child Care Inventory

The City currently owns thirteen purpose-built child care facilities and Early Childhood Development Hubs which are leased to and operated by non-profit organizations. These facilities provide a total of 620 spaces of licensed child care and represent approximately 7.4% of the total 8,337 licensed child care spaces in Richmond. There is currently one additional City-owned facility, Hummingbird Child Care Centre, which has recently been completed and will be operational in Spring 2023. This new facility will contribute an additional 37 spaces of licensed child care in 2023. In addition, Community Associations and Societies continue to provide an additional 801 spaces of licensed preschool and school-age child care. Combined, the child care spaces in City-owned facilities and those operated by Community Associations and Societies represent 17% of the total child care inventory in Richmond of 8,337 spaces.

As part of the development of the *2017–2022 Richmond Child Care Needs Assessment and Strategy*, an analysis of licensed child care space in 2016 was conducted. The *2021–2031 Richmond Child Care Action Plan* and the *2021 Update to the 2017–2022 Richmond Child Care Needs Assessment and Strategy* included an update to the inventory of child care spaces in Richmond, based on 2021 licensed child care spaces and 2016 Census population data. To build on previous profiles of child care spaces, this section of the report provides an updated child care profile that includes licensed child care spaces in 2022 and 2016 Census population data. Whilst some of the 2021 Canadian Census data has been published, detailed population data for planning area has not yet been made available. Therefore, for the purposes of this update, the 2016 Census population data has been used.



Information on licensed child care spaces was collected in December 2022 to update the data on child care spaces in Richmond. To compare trends over time, information on licensed child care spaces from Vancouver Coastal Health and 2016 Census Data was used to calculate the child care space profiles for Richmond Planning Areas. Information on licensed child care spaces was also analyzed with child population data to create a 2022 inventory of child care spaces.

In 2022, there were **35.6 CHILD CARE SPACES** per 100 children from birth to 12 years in Richmond.



The overall number of licensed child care spaces in Richmond increased by 8% between 2021 and 2022 (Table 1). An increase of 627 child care spaces has occurred over the last year and since the *2021 Update*. This amounts to a current total of 8,337 licensed child care spaces in Richmond. Over the period of 2016–2022, there has been significant uplift in the creation of child care spaces across all types of care resulting in 2,535 new spaces over this period, comprising a 44% increase.

Table 1: Trends in Licensed Child Care Spaces in Richmond: 2016–2022

Type of Care	Number of Licensed Child Care Spaces ¹						Change 2016–2022		Change 2021–2022	
	2016	2018	2019	2020	2021	2022	Change in spaces	% Change	Change in spaces	% Change
Group Care – Under 36 Months	664	928	1,023	1,211	1,495	1,661	+997	150%	+166	11%
Group Care – 30 Months to School Age	2,103	2,581	2,708	2,850	3,210	3,446	+1,343	64%	+236	7%
Group Care – School Age	1,666	1,685	1,822	1,817	1,814	1,964	+298	18%	+150	8%
Family Child Care	341	234	248	197	204	188	-153	-45%	-16	-8%
In-home Multi-age Care	81	104	105	72	80	87	+6	7%	+7	9%
Multi-age Care	88	96	80	120	120	120	+32	36%	0	0%
Preschool	819	769	791	729	761	845	+26	3%	+84	11%
Occasional Care	40	42	26	26	26	26	-14	-35%	0	0%
Total	5,802	6,439	6,803	7,022	7,710	8,337	+2,535	44%	+627	8%

In the past year, the number of new licensed Group Care (Under 36 Months) and Group Care (30 Months to School Age) spaces, have seen the largest growth in spaces of all child care types in Richmond. These types of child care have increased by 166 spaces (11% increase) and 236 spaces (7% increase) respectively. The number of preschool spaces have also increased by 11%, comprising an additional 84 licensed child care spaces. While this increase varies by Planning Area, large increases in the number of spaces for the 0 to 2 years age group addresses a significant priority area outlined in the *2017–2022 Richmond Child Care Needs Assessment and Strategy*.

¹ The first progress update was undertaken 18 months after the publication of the Strategy, therefore no data was recorded in 2017.

Since 2016, the largest growth in child care spaces has been seen in Group Care (Under 36 Months) spaces with an increase of 997 spaces; a 150% increase. There have also been long term increases in the number of Group Care (30 Months to School Age) and Group Care (School Age) spaces in Richmond. There are currently 64.9 Group Care (30 Months to School Age) child care spaces per 100 children aged 3 to 5 years in Richmond (Table 2). There has also been an increase in the number of Group Care (School Age) spaces by 150 spaces from 2021–2022. However between the years 2019–2021, this type of child care had experienced significantly less change in the number of spaces and there are currently 15.3 Licensed Group Care (School Age) child care spaces per 100 children aged 6 to 12 years (Table 2). This highlights that this type of care remains an important priority for space creation in Richmond.

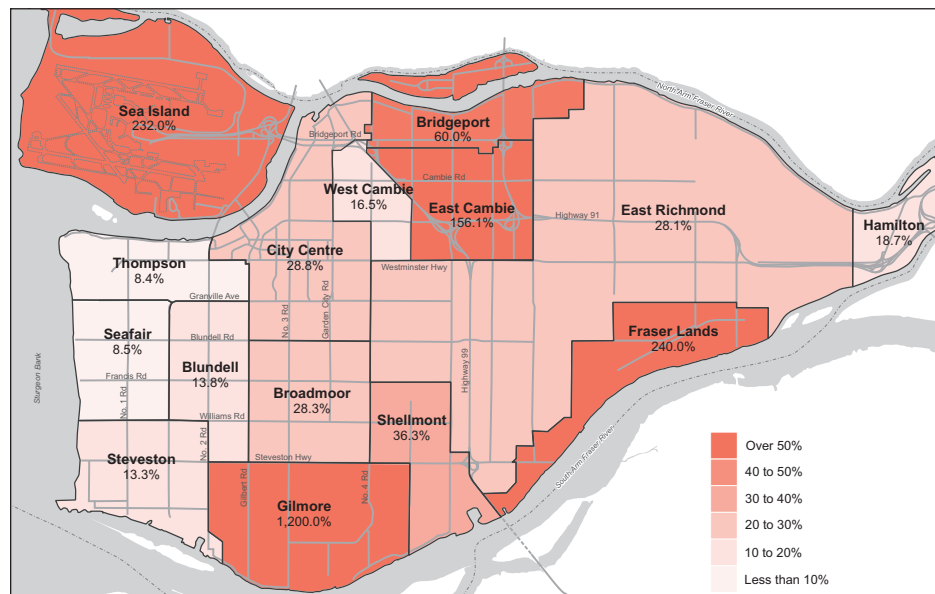
Table 2: Group Child Care Spaces per 100 Children by Type of Child Care Licence

Type of Child Care Licence	Number of Licensed Child Care Spaces	Child Population*	Child Care Spaces per 100 Children
Group Care – Under 36 Months	1,661	5,250	31.6
Group Care – 30 Months to School Age	3,446	5,305	64.9
Group Care – School Age	1,964	12,830	15.3
Total	8,337²	23,385	35.6

*Child population is based on 2016 Census Data

Child care spaces are also monitored across the various Planning Areas in Richmond and compared to the number of children residing in each neighbourhood. (Figures 1,2, and 3).

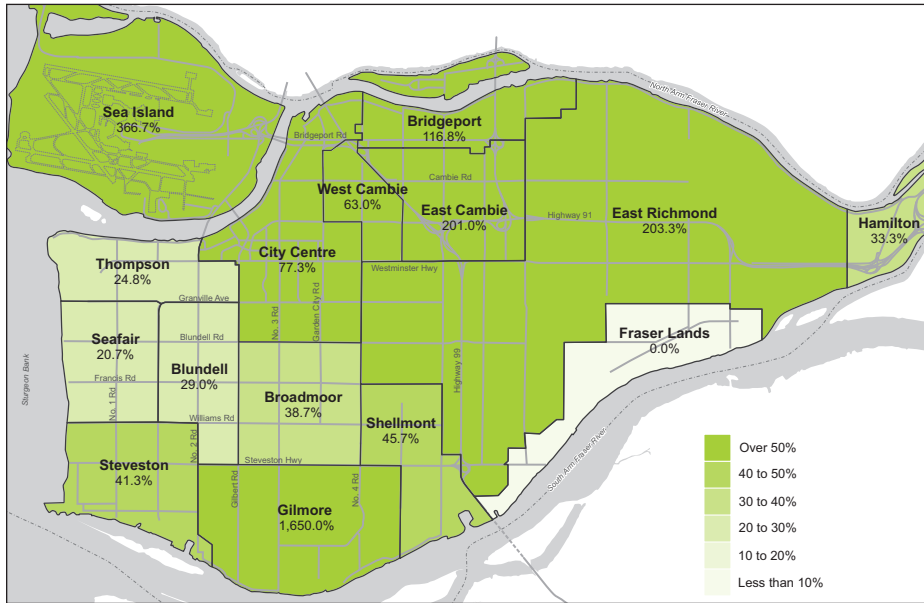
Figure 1: Percent of Child Care Need Met for Children Aged 0 to 2 Years through Licensed Group Care (Under 36 Months), by Planning Area, 2022^{3, 4}



In 2022, there were **31.6 GROUP CARE (UNDER 36 MONTHS) SPACES** per 100 children aged 0 to 2 years in Richmond.

2 Note: Includes family child care, multi-age care, in-home care, occasional care and preschool programs.
 3 Note: Does not include family child care, multi-age care, in-home care, occasional care or preschool programs.
 4 Note: Numbers greater than 100 indicate more child care spaces than children of that age in that planning area.

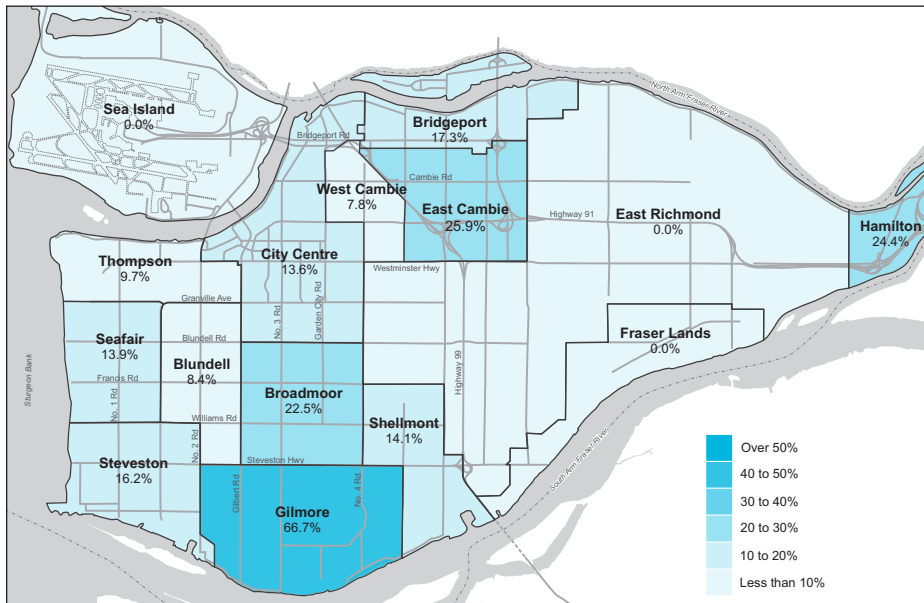
Figure 2: Percent of Child Care Need Met for Children Aged 3 to 5 Years through Licensed Group Care (30 Months to School Age), by Planning Area, 2022^{5, 6}



In 2022, there were **64.9** **GROUP CARE (30 MONTHS TO SCHOOL AGE) SPACES** per 100 children aged 3 to 5 years in Richmond.



Figure 3: Percent of Child Care Need Met for Children Aged 6 to 12 Years through Licensed Group Care (School Age), by Planning Area, 2022^{7, 8}



In 2022, there were **15.3** **GROUP CARE (SCHOOL AGE) SPACES** per 100 children.



In 2022, a total of 28 new programs opened within 18 facilities in Richmond, resulting in 569 new licensed child care spaces for the city. However, while 2022 saw an overall increase in the number of licensed child care spaces, there were also closures of programs in Richmond (Table 3). A total of 17 programs

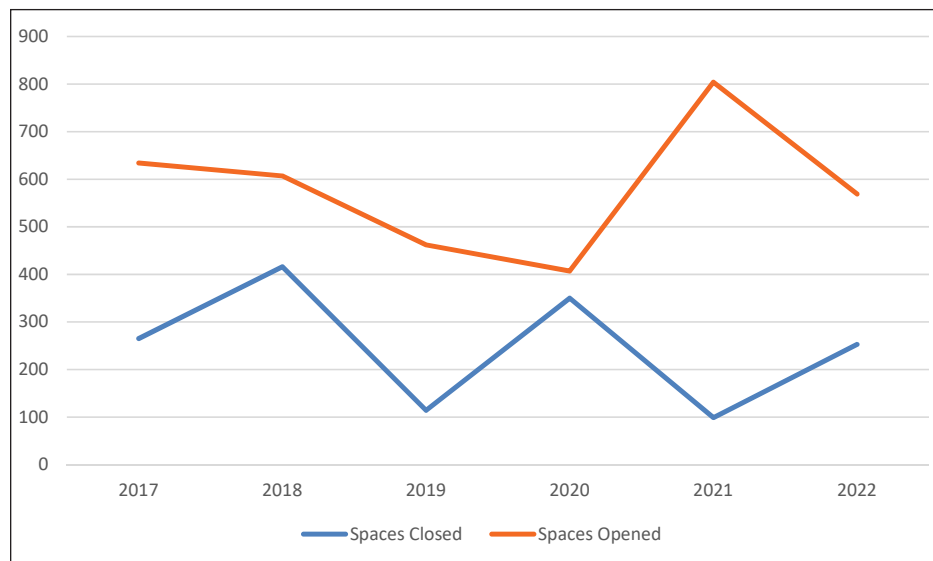
5 Note: Does not include family child care, multi-age care, in-home care, occasional care or preschool programs.
 6 Note: Numbers greater than 100 indicate more child care spaces than children of that age in that planning area.
 7 Note: Does not include family child care, multi-age care, in-home care, occasional care or preschool programs.
 8 Note: Numbers greater than 100 indicate more child care spaces than children of that age in that planning area.

within 14 facilities closed in 2022 resulting in a loss of 253 licensed child care spaces. Group Care (30 months to School Age) and Group Care (School Age) experienced the largest loss in licensed spaces resulting in a loss of 114 and 79 spaces respectively. As Figure 4 demonstrates, there has been significant fluctuation in the number of opened and closed child care spaces in Richmond over the Strategy period. The number of closed facilities and loss of licensed spaces in 2022 is significantly higher than the number of closures reported in the 2021 Update; which saw the closure of 17 facilities resulting in the loss of 99 licensed spaces.

Table 3: Licensed Child Care Spaces and Facility Closures and Openings in 2022

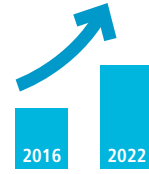
Type of Care	Licensed Child Care Spaces – Closed	Licensed Child Care Programs – Closed	Licensed Child Care Spaces – Open	Licensed Child Care Programs – Open
Group Care – Under 36 Months	30	3	112	7
Group Care – 30 Months to School Age	114	5	218	9
Group Care – School Age	79	5	133	4
Family Child Care	14	2	7	1
In-home Multi-age Care	8	1	7	1
Multi-age Care	8	1	8	1
Preschool	0	0	84	5
Occasional Care	0	0	0	0
Total	253	17	569	28

Figure 4: Number of Licensed Spaces that Opened and Closed from 2017–2022



2021–2031 Richmond Child Care Action Plan Targets

The 2021–2031 Richmond Child Care Action Plan outlines a target to increase licensed child care spaces in Richmond by 3,688 spaces between 2021 and 2031. This includes a target of 563 new Group Care (Under 36 Months) spaces, 1,087 new Group Care (30 Months to School Age), 1,974 new Group Care (School Age) spaces and 64 additional spaces through other types of care including occasional care, child-minding and multi-age overnight care. Data on licensed child care spaces previously outlined, indicates that significant progress has already been made to achieve these targets, as outlined in Table 4.



The supply of child care spaces in Richmond **INCREASED 44%** from 2016 to 2022.

Table 4: 2031 Licensed Child Care Space Targets compared to 2022 Supply

Type of Care	2031 Target	2022 Supply	Target Met (%)
Group Care – Under 36 Months	1,774	1,661	94%
Group Care – 30 Months to School Age	3,937	3,446	88%
Group Care – School Age	3,791	1,964	52%
Occasional Care	58	26	45%
Licensed Child Minding	24	0	0%
Multi-Age Child Care – Overnight Care	8	0	0%
Total*	10,710	8,337	78%

*Includes all types of child care, including licensed preschool, multi-age care, in-home multi-age care and family child care.





Progress

The *2017–2022 Richmond Child Care Needs Assessment and Strategy* was adopted by City Council on July 24, 2017 and outlined 32 recommended actions to accomplish throughout the five-year period. This is the final update to the *2017–2022 Richmond Child Care Needs Assessment and Strategy* and therefore, the purpose of this section is to provide an overview of how the City has responded and addressed each of the recommended actions and to highlight its accomplishments over the strategy period. To summarise, over the five year period the City has either completed or made significant progress on all of the 32 actions recommended within the *2017–2022 Richmond Child Care Needs Assessment and Strategy*.

2022 Significant Achievements

In 2022, significant advancements and achievements occurred within the City’s child care portfolio, including:

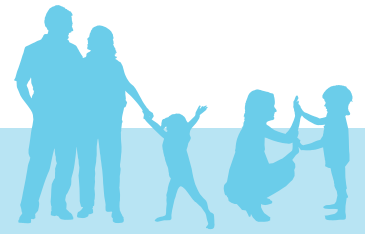
- Hummingbird Child Care Centre was completed and transferred to the City of Richmond in December 2022. The new Hummingbird facility is located at 6899 Pearson Way and was secured as part of the rezoning by Oval 8 Holdings Limited (ASPAC Developments) and delivered as part of the ‘River Green’ mixed use development. The facility will be operated by the YMCA of Greater Vancouver and provides 1,485.8 square metres, which includes 619.7 square metres of indoor space and 409.6 square metres of outdoor playground space. This new facility will provide 37 new licensed child care spaces: 12 spaces of Group Care (Under 36 Months) and 25 spaces of Group Care (30 Months to School Age).
- The *2021–2031 Richmond Child Care Action Plan* provides child care space creation targets over 10 years and was completed and adopted by City Council on April 12, 2021. At the end of 2022, the City and community have increased child care spaces by 627 since 2021, a total of 8,337 spaces representing 78% of the overall target for the *2021–2031 Richmond Child Care Action Plan* period, which is significant progress towards the target of 10,710 licensed child care spaces.
- Updates were made to resources and materials to support child care operators who wish to open new facilities, renovate or expand to navigate the multiple regulatory processes involved. These detailed documents ensure child care operators have the required background resources and information relating to relevant City, Vancouver Coastal Health and Richmond Fire Rescue processes and expectations to make informed decisions and successfully navigate the steps involved in opening new child care spaces.

1 CITY-OWNED CHILD CARE FACILITY was completed



A total of **37** new licensed child care spaces.





1 Strategic Direction #1: Policy and Planning

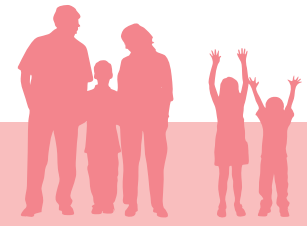
Why is this important?

The City's role in child care policy and planning is to support the development and ongoing provision of an adequate supply of local, licensed child care spaces to meet the needs of resident and employment populations. This entails conducting periodic child care needs assessments and monitoring data sources to analyze trends and child care space needs and availability within the Richmond community. The City's role also involves the administration of the City's Child Care Grant Program and support to the Child Care Development Advisory Committee.

Highlighted Achievements

- A review of the Official Community Plan (OCP) and Zoning Bylaw was completed in December 2021 and January 2022. From this review, it was concluded that the current OCP provides a number of opportunities to facilitate the accommodation of child care facilities in the city; it is generally possible to provide child care programs in all neighbourhoods within the city. It was determined that no amendments to the current wording of the OCP or to the Zoning Bylaw were warranted at this time. City staff continue to support future child care operators in their selection of appropriate locations for child care delivery and in navigating the various regulatory approvals and processes involved in opening/expanding licensed child care in Richmond.
- Over the five year period between 2017 and 2022, a total of \$7,205,048 was received in developer contributions to the Child Care Development Reserves. In 2022, the City's Child Care Development Reserve did not receive any new contributions as there were no new development projects moving forward with rezoning considerations that required a contribution. These funds are used to assist in the creation of new child care spaces in Richmond by supporting the development of new City-owned child care facilities and developing resources to support innovation and best practice in the design of City-owned child care facilities. In addition, the Child Care Development Reserve supports the maintenance and enhancement of child care within the city by providing grants to non-profit societies through the Child Care Capital Grant Program.





2 Strategic Direction #2: Creating and Supporting Spaces

Why is this important?

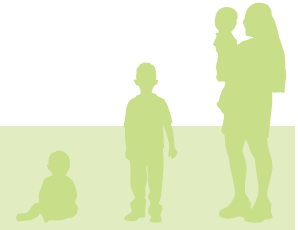
The City supports the creation of child care spaces by accepting voluntary contributions from developers in the form of built child care facilities or cash-in-lieu contributions to the City's Child Care Statutory Reserves. As of 2022, the City currently manages and maintains thirteen existing City-owned child care facilities. There are also dedicated City resources to help develop, maintain and support the child care system in Richmond. This is in addition to child care spaces provided in recreation facilities and operated by Community Associations and Societies.

Highlighted Achievements

- Hummingbird Child Care Centre, the child care facility secured as a community amenity contribution in the River Green development, was completed and transferred to the City in December 2022. This 37 space facility will be operated by the YMCA of Greater Vancouver. This City-owned child care facility is expected to be operational in spring 2023.
- The 2022 City of Richmond Child Care Grants were approved and a total of \$57,400 was awarded to eight organizations including:
 - \$50,000 in Capital Grants to provide necessary capital items such as playground renovations; and
 - \$7,400 in Professional and Program Development Grants to provide enhancements and equipment for the Supported Child Development Program's lending library.
- Collaboration and coordination continued with the Richmond School District and resulted in additional opportunities to co-locate child care with schools through the sharing of information regarding Provincial Funding Programs and data on child care needs in Richmond. The School District accessed the Province of BC's ChildCare BC Funding Programs to deliver 25 group child care spaces (30 months to school age) and an additional 25 before and after school group child care spaces at Maple Lane Elementary and 25 group child care spaces (30 months to school age) at Manoah Steves Elementary. These facilities are purpose built facilities; scheduled for completion in spring/summer 2023. New child care facilities have also been created at F.A. Tomsett Elementary and Robert J. Tait Elementary.
- Updates were made to resources and materials to support child care operators who wish to open new facilities, renovate or expand to navigate the multiple regulatory processes involved.

In 2022,
\$50,000
 FOR
CAPITAL
EXPENSES and
\$7,400 FOR
PROFESSIONAL AND
PROGRAM DEVELOPMENT
 was approved through the
 child care grant program.





3 Strategic Direction #3: Advocacy

Why is this important?

The City advocates on behalf of its residents to address the needs of Richmond's resident and employee population. Facilitating quality, accessible and affordable child care is within the mandate of senior levels of government, and the actions below address advocacy items that the City can undertake.

Highlighted Achievements

- In 2022, during the Union of BC Municipalities Conference, a meeting took place between members of Richmond City Council and the Minister of State for Child Care and Minister of Education and Child Care to discuss priorities for child care in Richmond, the needs of the Richmond community and provincial funding programs and initiatives. In addition to this, meetings also took place at the staff level between the City and the Ministry of Education and Child Care. These opportunities foster and support partnerships and advocacy across various levels of government as well as showcasing the excellent work being done in Richmond to create and support licensed child care.
- Presentations on the creation of licensed child care and municipal partnerships in child care were given by staff to delegates attending the annual Union of BC Municipalities Conference and to members of the Metro Vancouver Social Issues Subcommittee. These presentations provide valuable information and support the advocacy efforts of elected officials and municipal staff in enhancing child care options in their communities. Richmond is a recognized leader in this area across the province.





4 Strategic Direction #4: Accessibility and Inclusion

Why is this important?

The City works to create an inclusive environment for all residents, in partnership with community organizations. Improving access to information about child care, supporting family services for newcomer families, and enhancing services for children with diverse needs are all important areas that the City strives to strengthen.

Highlighted Achievements

- The *Richmond Child Care Design Guidelines* (the Design Guidelines) provides best-practice design standards to inform the creation of City-owned child care facilities in Richmond. This resource document is also used by developers, architects and child care operators in the community. The Design Guidelines underwent a review in 2022 in order to update information to reflect learnings and new design standards. An updated document has been prepared and will be published in early 2023.
- Resources and information on accessing child care and child care funding to support families was shared with the Richmond School District for the purpose of supporting refugee families from the Ukraine who were settling in Richmond. This information was also shared with SWIS (settlement workers in schools) to support all newcomer families.
- Funding was provided through the Child Care Grants program to support expansion and enhancements to the toy and resource lending library operated by Aspire Richmond's Supported Child Development Program and located at Seedlings Early Childhood Development Hub. This lending library is available to families whose children may require extra support to attend child care or have a developmental delay or identified disability. Materials in the library foster development, social interaction and inclusion.

The updated Child Care Design Guidelines will provide technical guidance for the design of all **FUTURE CITY-OWNED CHILD CARE FACILITIES**.





5 Strategic Direction #5: Collaboration and Partnership

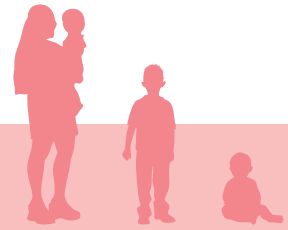
Why is this important?

The City of Richmond engages in and seeks partnerships and collaboration with others to advance its child care strategy. The City continues to identify potential opportunities to work with community partners to remain well informed and prepared to respond to funding opportunities and policy changes.

Highlighted Achievements

- In 2022, the Richmond Child Care Development Advisory Committee (CCDAC) provided continued support to City staff and City Council. Of particular importance in 2022 was the expertise, advice and input provided into the commencement of operations and community access at Seedlings and Sprouts Early Childhood Development Hubs. The CCDAC was established to provide City Council with advice regarding the planning, development, support and promotion of quality, affordable and accessible child care in Richmond. The CCDAC also reviewed and monitored ongoing changes to provincial oversight of child care and expanded funding programs initiated by senior levels of government to support child care initiatives.
- In 2022, the Richmond Child Care Development Advisory Committee and the City planned and hosted two public events for Child Care Month in May in collaboration with Richmond Child Care Resource and Referral and the Richmond Public Library. The events included a symposium for early childhood educators, child care providers and parents titled Supporting Richmond's Children. This included three presentations titled 'The Current State of Richmond's Children', 'Increasing Resilience for Child Care Providers' and 'Nurturing and Responsive Relationships'. There were 121 registered participants.
- As part of the 2022 Child Care Month activities, the Child Care Development Advisory Committee and the City hosted a second event, a children's art exhibition that featured original creations from local child care programs and received 22 submissions from 13 child care facilities. These were displayed on the Community Art Wall at the Brighthouse Branch of the Richmond Public Library from May 2 to May 22, 2022.





6 Strategic Direction #6: Research, Promotion and Marketing

Why is this important?

The City conducts research on child care trends, creates tools to assist the public with finding child care resources, prepares publications to help potential child care operators create child care space, and promotes access to resources within the community.

Highlighted Achievements

- The City has continued to monitor, review and disseminate research in the child care sector relating to the impacts of the COVID-19 pandemic on children and families. This information was compiled from various organizations and published reports and used internally to support community organizations delivering child care services across Richmond.
- Updated and enhanced materials to support child care operators in creating child care spaces were released in 2022 following a comprehensive review and update in collaboration with Vancouver Coastal Health, Child Care Licensing and Richmond Fire Rescue. The updated 'Creating Child Care Spaces in Richmond' brochure supports child care operators in navigating the process for opening or renovating a child care program in Richmond.





7 Strategic Direction #7: Monitoring and Renewal

Why is this important?

With changing demographics and the evolution of the child care landscape in Richmond, the City will continue to monitor and renew its policies and strategies with key data and research. The following actions discuss approaches for planning the next Child Care Needs Assessment and Strategy as well as research work that benefits and advances the City's child care work.

Highlighted Achievements

- The *2021–2031 Richmond Child Care Action Plan*, completed in 2021 and implemented in 2022, informs the City's ongoing work to support the child care sector and outlines actions that the City and its community and public partners, including the Richmond School District and Vancouver Coastal Health, can undertake to enhance sector stability and increase child care spaces. The actions outlined in the Plan form a framework to further support the development of additional child care spaces in Richmond in City-owned, non-profit and private facilities. Evaluation and monitoring are key actions in the plan and specifically include monitoring child care need and availability across Richmond and continued monitoring of the impacts of the COVID-19 pandemic on child care enrollment, workforce changes and the stability of the child care sector.
- Actions within the *2017–2022 Richmond Child Care Needs Assessment and Strategy* were progressed in 2022 and development of a new ten year Child Care Strategy for Richmond is currently underway. This new strategy will identify the key child care needs for Richmond and will create a set of directions and actions to guide the City and key partners to address these needs over the next ten years.

Next Steps

The City of Richmond's *2017–2022 Richmond Child Care Needs Assessment and Strategy* outlines a range of short to long term and ongoing actions to support the development of a comprehensive child care system in Richmond. This report, alongside the annual update reports, provides information on the City's progress in meeting all strategic actions since the Strategy was adopted in July 2017. The City continues to implement actions outlined in the Strategy and in the *2021–2031 Richmond Child Care Action Plan*. Significant progress has been made in 2022 to increase child care spaces in the community. Currently in Richmond, the demand for child care continues to exceed the supply with child care spaces available for only 35.6% of children across all types of licensed child care.

In 2023, the City will:

- Continue implementation of actions identified in *2021–2031 Richmond Child Care Action Plan*;
- Undertake a review of the 2021 Census Data once new data is published in order to inform current and future child care needs for Richmond; and
- Prepare a new 10 year Child Care Strategy to guide initiatives and activities related to child care for the next decade.

Following the development of a new 10 year Child Care Strategy the advancement of recommended actions within the strategy will continue to be monitored and highlighted within regular update reports.



Conclusion

The *2017–2022 Richmond Child Care Needs Assessment and Strategy: 2022 Update* celebrates the significant achievements the City of Richmond has made over the past five years in the creation, expansion and enhancement of child care since the Strategy's adoption. It reinforces the critical value of the City's ongoing commitment to working in partnership with key stakeholders to establish a comprehensive child care system.

The City has demonstrated its commitment to child care by establishing a Child Care Development Statutory Reserve Fund, building City-owned child care facilities and Early Childhood Development (ECD) Hubs, and conducting regular child care needs assessments. Planning is currently underway for both the implementation of the *2021–2031 Richmond Child Care Action Plan* and the development of a new, 10 year child care strategy. The City of Richmond is a strong advocate for quality child care and will continue to work collaboratively with community partners including the Richmond School District, Vancouver Coastal Health, Community Associations and Societies, multi-service agencies who support families and child care operators, and organizations to address the needs of children, families and employers. All of these factors combined will position the City of Richmond to continue to expand and enhance quality, inclusive licensed child care availability in Richmond over the next ten years.

In the upcoming year, the City and its key stakeholders will engage families, child care providers and the broader community to assess the current child care needs and priorities for Richmond. The City will also undertake a review of the 2021 Census Data once new data is published in order to inform current and future child care needs for Richmond. This information will be used to develop a new 10 year Child Care Strategy to guide and inform the City's work in this essential area. The City will continue to identify and support innovative and creative approaches to create and promote high-quality child care to further the vision, "to continue to be a municipal leader in fostering the conditions for a comprehensive child care system in Richmond."



Appendix A

Status Update: 2017–2022 Richmond Child Care Needs Assessment And Strategy Strategic Directions And Actions

Short term: 1–3 years

Long term: 4–5 years

Strategic Direction	Recommended Actions	Status
Policy and Planning	1. Review Richmond’s child care space needs and update child care space targets by Planning Area, utilizing the 2016 Long-form Canada Census data for the City and its planning areas. (Short term) KEY PRIORITY	Completed
	2. Review the current status of existing child care spaces in Richmond. Working with assistance from the City’s Planning staff to: <ul style="list-style-type: none"> <li data-bbox="435 814 1174 982">a. Undertake a review of areas in the city with the capacity for more intense redevelopment or that may be subject to land use changes (e.g. industrial “let go” areas) to understand if there are any potential impacts to maintaining existing child care spaces. <li data-bbox="435 993 1174 1163">b. Consult with the School District about school enrolment changes and facility redevelopment that may affect use of school properties for licensed child care spaces and other child and family development programs. (Short term) KEY PRIORITY 	Completed
	3. Review and seek direction on amendments to the City’s Official Community Plan to determine if any amendments are required to sections addressing child care (e.g. sizes for child care facilities serving a range of age groups, calculations for cash contributions). (Long term)	Completed
	4. Conduct a review to ensure that the Child Care Grant Program is meeting the non-profit child care operator’s needs (e.g. timing, number of grant cycles per year, budget). (Short term)	Completed
	5. Review internal City mechanisms for maintaining and coordinating City-owned child care facility improvements (e.g. ongoing maintenance of facilities, operating budget impact estimators, minor and major capital improvements). (Short term)	Completed
	6. Review and update the Terms of Reference for the Child Care Development Advisory Committee (CCDAC) to ensure the committee is fulfilling its role and mandate. (Short term)	Completed

Strategic Direction	Recommended Actions	Status
Creating and Supporting Spaces	7. Continue to secure community amenity contributions through rezoning processes, focusing on the creation of early childhood development hubs. (Long term) KEY PRIORITY	Significant progress made
	8. Work with other City of Richmond departments to plan, secure and build child care spaces co-located with other community facilities. (Long term)	Significant progress made
	9. Review the Child Care Statutory Reserve Fund policy to consider how fund contributions could be apportioned to the Child Care Development Reserve Fund and the Child Care Operating Reserve Fund (e.g. 70% for Capital and 30% for Operating as opposed to the current split of 90% for Capital and 10% for Operating). (Short term) KEY PRIORITY	Completed
	10. Explore mechanisms to increase City staff resources to advance the City’s child care priorities. <ul style="list-style-type: none"> a. Provide additional staff resources (e.g. Planner 1 – Child Care in Community Social Development) to support continued implementation of the Child Care Policy and fulfill the recommendations presented in this report; and b. Support the development of facilities secured as community amenity contributions by ensuring there is an integrated City department approach applied to working with developers providing these amenities. (Short term) KEY PRIORITY 	Completed Significant progress made
	11. Continue to manage and maintain existing and future City-owned child care facilities to ensure both the City and non-profit operators are fulfilling their lease obligations, leases are up to date, and facilities are well maintained. (Long term)	Completed
	12. Pursue partnerships and funding opportunities with senior levels of government for capital investment to assist with the creation of City-owned child care spaces in Richmond. (Long term)	Significant progress made
	13. Work with Community Associations to learn about child care needs in the neighbourhoods they serve and how they can build capacity to meet these needs. (Long term)	Ongoing

Strategic Direction	Recommended Actions	Status
<p>Advocacy</p>	<p>14. Send a letter to the Federal Government to indicate the City of Richmond’s support for the development and implementation of a meaningful, appropriately funded Multilateral Early Learning and Child Care Framework for Canada. (Short term)</p>	<p>Federal Government actioned the Early Learning and Child Care Framework for Canada prior to letter being completed.</p>
	<p>15. Send letters to the Provincial Government:</p> <ul style="list-style-type: none"> a. Expressing City Council’s endorsement of the \$10aDay Child Care Plan; b. Requesting that the City of Richmond be consulted about the creation and implementation of a future Provincial child care plan; and c. Recommending wage enhancements for Early Childhood Educators to attract qualified staff and to support both existing and new child care spaces (e.g. increases to the Child Care Operating Fund Program). (Short term) 	<p>Completed</p> <p>Completed</p> <p>Completed</p>
	<p>16. Send a letter to the Provincial Government requesting that the benefit rates and eligibility provisions for the Child Care Subsidy be reviewed and increased (e.g. expanded coverage for median or moderate income families). (Short term)</p>	<p>Completed</p>
	<p>17. Send a letter to the Provincial Government requesting that they review and increase funding for Early Childhood Intervention Services in accordance with the #KidsCantWait Campaign. (Short term)</p>	<p>Completed</p>
	<p>18. Continue to monitor funding and grant opportunities along with future actions planned by senior levels of government regarding child care initiatives to maximize opportunities to enhance affordable, accessible and quality care in Richmond. (Short term)</p>	<p>Ongoing</p>

Strategic Direction	Recommended Actions	Status
<p>Accessibility and Inclusion</p>	<p>19. Collaborate with Vancouver Coastal Health, the Richmond School District, other schools in Richmond (e.g. private, francophone), Richmond Child Care Resource and Referral, Richmond Children First, the City of Richmond Child Care Development Advisory Committee, the Intercultural Advisory Committee, Community Associations, child care providers, and other appropriate parties to improve availability of information to Richmond families on child care and family-related resources. (Short term)</p>	<p>Significant progress made</p>
	<p>20. Consult with the City of Richmond’s Accessibility and Inclusion section, the Intercultural Advisory Committee, and multicultural and immigrant serving organizations to determine ways to:</p> <ul style="list-style-type: none"> a. Improve the dissemination of information on child care to newcomers; and b. Establish ongoing communication channels to enable the City to keep abreast of the needs of and challenges facing recent immigrants regarding child care. (Short term) 	<p>Progress made and action ongoing In progress</p>
	<p>21. Work with the City departments and sections, as well as external organizations who focus on accessibility issues to:</p> <ul style="list-style-type: none"> a. Incorporate barrier-free design into new City-owned early childhood development hubs and child care facilities; and b. Explore innovations in child care facility design for both indoor and outdoor areas that would enhance the inclusion of children who require extra supports. (Long term) 	<p>Significant progress made</p> <p>Significant progress made</p>

Strategic Direction	Recommended Actions	Status
Collaboration and Partnership	22. Continue to support the work of the City’s Child Care Development Advisory Committee with the view of building the capacity of the child care sector and parents understanding of child care options. (Short term)	Ongoing
	23. Facilitate and promote the delivery of professional development training for those employed in the delivery of licensed child care programs with the goal of maintaining and enhancing the quality of programs offered in Richmond. (Long term)	Ongoing
	24. Continue to consult with representatives from senior levels of government, other municipalities, Vancouver Coastal Health, Richmond Children First, United Way of the Lower Mainland, the UBC Human Early Learning Partnership and the First Call – BC Child and Youth Advocacy Coalition to ensure that the City is well informed about latest trends, research and advocacy efforts concerning child care matters. (Short term)	Significant progress made
	25. Build and foster relationships with senior levels of government to ensure the City is consulted on federal and provincial policy changes. (Short term)	Ongoing
	26. Seek new partnerships around the delivery of child care services. (Long term)	Ongoing
	27. Host one inter-municipal roundtable workshop to share information and best practices in child care policy, facility development, grants administration and successful advocacy approaches to senior levels of government. (Short term)	Completed

Strategic Direction	Recommended Actions	Status
Research, Promotion and Marketing	28. Regularly update the City's child care website to provide information on current civic initiatives related to child care and links to useful resources that build awareness and educate the community. (Short term)	Ongoing
	29. Monitor and share the latest trends in child care research and best practices in the delivery of quality child care programs with the City's Child Care Development Advisory Committee, Community Associations, Richmond Children First, Richmond Child Care Resource and Referral Centre, Vancouver Coastal Health, child care providers, and other community agencies and organizations. (Long term)	Ongoing
	30. Continue to develop child care educational resources and further expand the complement of promotional vehicles such as social media to share information about child care with parents and child care providers. (Short term)	Ongoing
Monitoring and Renewal	31. Update City policies, plans and publications: <ul style="list-style-type: none"> a. Continue to work with the City's Planning Department and other related Departments to update City policies that reference child care; and b. Continue to work with City staff and consultants to undertake research and update City publications and working documents (e.g. Terms of Reference for rezoning reports, City of Richmond Child Care Design Guidelines for City-owned buildings, and checklists related to development processes). (Short term) 	Review of policy completed Completed and actions ongoing
	32. In planning for the next Child Care Needs Assessment and Strategy: <ul style="list-style-type: none"> a. Commence the next child care needs assessment and strategy work in late 2022. Begin the survey work and community engagement process, prior to the release of the 2021 Canada Census, and incorporate demographic information for Richmond geographies when it becomes available in 2023. b. Seek information and assistance from Richmond Multicultural Community Services Society, S.U.C.C.E.S.S., and other newcomer-serving organizations regarding approaches for increasing the interest and involvement of the recent immigrant community in the next child care needs assessment community engagement process. (Long term) 	Process begun and will continue throughout In process



City of Richmond

6911 No. 3 Road, Richmond, BC V6Y 2C1

Telephone: 604-276-4000

www.richmond.ca