

CRIME PREVENTION

WORKING TOGETHER TO PREVENT CRIME

NEWSLETTER

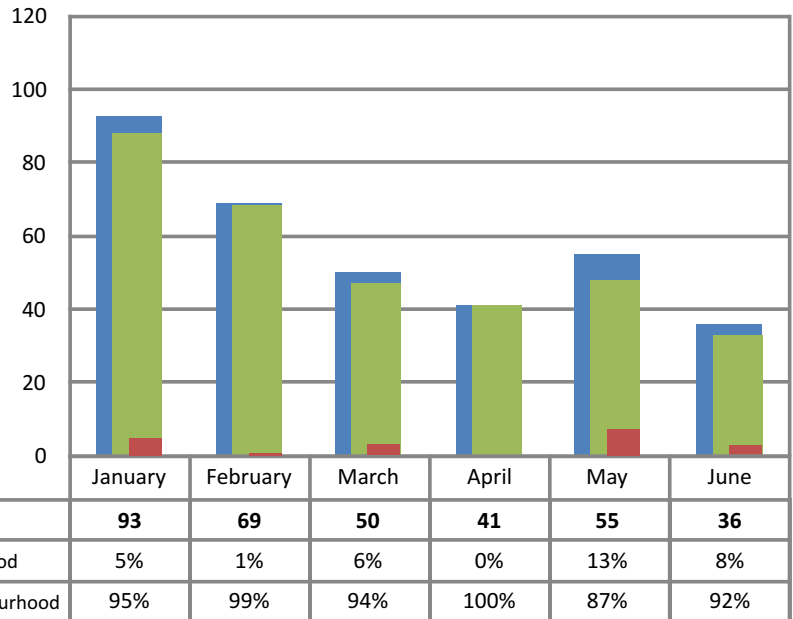
Residential Break and Enters January–June 2013

Block Watch works!

Just look at the stats: 87–100% of all residential break and enters in Richmond this year have occurred in *non-Block Watch* neighbourhoods.

Help prevent residential break and enters, start a Block Watch group in your neighbourhood, in your complex, even in your high-rise apartment/condo building.

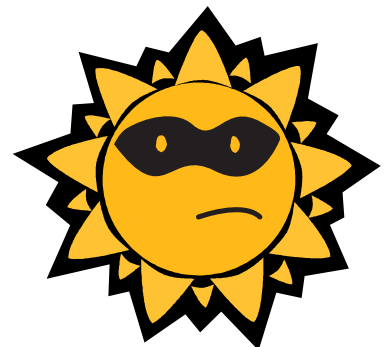
Visit www.richmond.ca/blockwatch or call 604-713-2340 for information to start your Block Watch group.



Criminals love summer!

All summer long people are outdoors gardening, barbecuing or relaxing. It's easy to forget to close a door or window, but if left open they create an easy opportunity for a thief. Open garage doors are regularly used by criminals to gain access to a home or to steal items from the garage. Once inside, the thief can grab an armful of things quickly, and run off without ever being noticed.

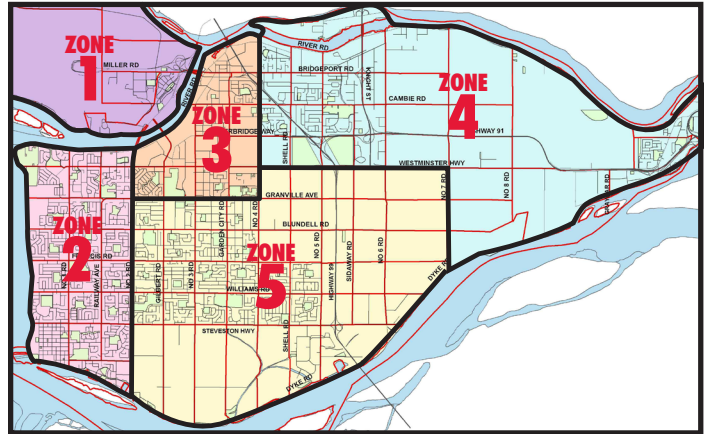
Some criminals will work together during the summer months. One will come to your door and distract you, while the other sneaks into your garage, back yard or home to take whatever they can grab. Be wary of anyone who approaches your front door and don't let them take up too much of your time. Teach your family how to guard themselves and your property and do what you can to ensure a safe and happy summer for everyone.



Richmond Residential Break and Enters April–June 2011, 2012, and 2013

Zone Map

	Zone 1	Zone 2	Zone 3	Zone 4	Zone 5
April 2011	0	13	4	5	18
April 2012	1	12	11	1	11
April 2013	0	4	12	5	20
May 2011	0	4	6	7	14
May 2012	0	12	6	5	18
May 2013	0	3	10	14	3
June 2011	0	9	6	3	13
June 2012	0	14	4	2	20
June 2013	0	11	9	4	12



The map outlines the five zones in Richmond. The chart to the left provides details on the number of Residential B&Es that have occurred in each zone.

After a Break and Enter, if your residence/business has been broken into, do not touch anything. If a suspect is present, call 9-1-1. If no suspect is present, call the Police non-emergency number at 604-278-1212. You will be asked for a description and the serial numbers of any stolen items.

Please visit www.richmond.ca/crime for neighbourhood crime information and www.richmond.ca/homesafety for home security tips.

Point of Entry Breakdown (June 2013)

Zone 1	0 Residential B&E
Zone 2	11 Residential Break and Enters including: 4 thru a door; 1 thru an unlocked door; 5 thru sliding doors; and 1 thru a window
Zone 3	9 Residential Break and Enters including: 2 thru a door; 1 thru an unlocked door; 5 thru sliding doors; and 1 thru a window
Zone 4	4 Residential Break and Enters including: 1 thru a door; 1 thru a window; and two other points of entry
Zone 5	12 Residential Break and Enters including: 5 thru doors; 2 thru unlocked doors; 1 thru a sliding door; 3 thru windows; and 1 thru an open window



Email Break & Enter Alerts

Email your name and street address to: blockwatch@richmond.ca to receive an email alert should a residential break and enter occur in your neighbourhood.

