



City of Richmond

Business and Financial Services Department
Finance Division
Telephone: 604-276-4218
Fax: 604-276-4162

April 14, 2013

Attention: To All Proponents

Re: 5165Q – Supply and Delivery of Pool Air Handling Unit and Heat Recovery Ventilator - Addendum # 1

This addendum forms part of the Contract Documents and shall be read, interpreted and coordinated with all other parts. Please review and consider the following information in the preparation of your Request for Quotation:

Equipment Schedule 15966 – Pool Air Handling Unit

1. Revise: AHU-1 and AHU-2 performance specifications
 - 1.1. Cooling Coil and Reheat Coil #1 for both units have been revised
 - 1.2. Fan information revised – Belt Drive Fans
 - 1.3. VSD's are to be supplied by AHU manufacturer

2. Add: AHU configuration shall be as per the attached drawing.

Attachments:

- Revised Air handling unit equipment schedule
- Air handling unit drawing

Please see the following pages.

Please acknowledge receipt of this addendum by submitting a signed copy with your response.

Signature

Print Name & Title

Date

Yours truly
Daianna Panni
Buyer

Watermania
 Richmond, BC
 AHU Upgrade
 Section 15966

**MECHANICAL
 EQUIPMENT SCHEDULES --
 POOL AIR HANDLING UNIT**

EQUIPMENT DATA

UNIT NO. SERVICE	AHU-1 & AHU-2 POOL VENTILATION / DEHUMIDIFICATION
LOCATION	ROOF

FAN DATA

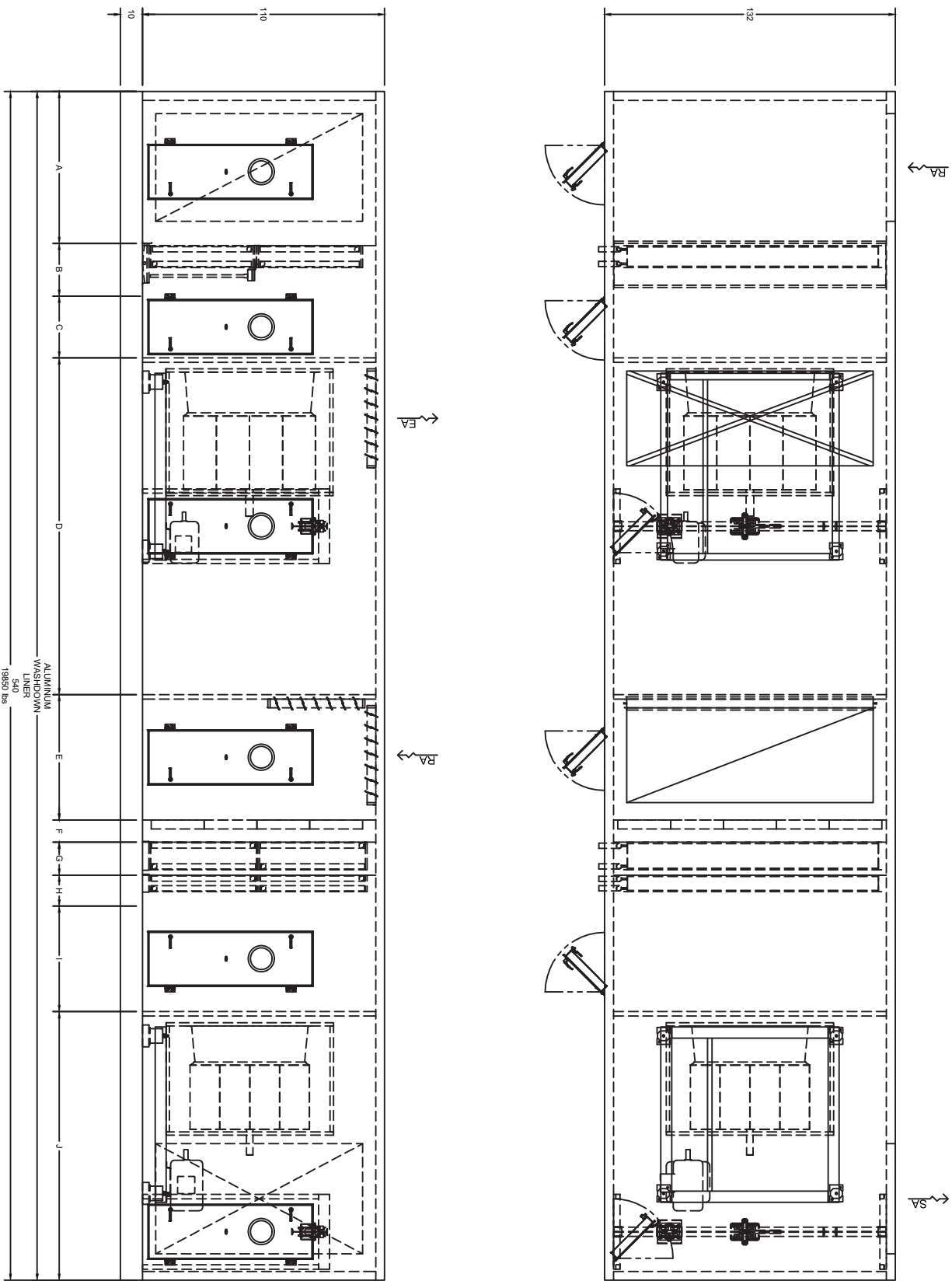
	SUPPLY	RETURN
AIRFLOW (L/s)	18880	19352
(CFM)	40000	41000
EXTERNAL (Pa)	375	312.5
STATIC PR (Inches)	1.50	1.25
FAN TYPE	VSD	VSD
DRIVE TYPE	BELT	BELT
FAN RPM	645	479
MOTOR HP	30	20
VOLTAGE/PHASE	600/3/60	600/3/60

COIL DATA

	COOLING (DEHUMIDIFICATION)	REHEAT (FROM HEAT RECOVERY UNIT)	REHEAT (FROM BOILER)
AIR FLOW (L/s)	18880	18880	18880
(CFM)	40000	40000	40000
TOTAL (kW)	367.8	268.8	220.1
CAPACITY (MBH)	1255.0	917.0	751.0
ENT AIR (Deg C)	26.7	26.7	8.9
(Deg F)	80.0	80.0	48.0
LEAVING AIR (Deg C)	15.6	38.6	40.0
(Deg F)	60.0	101.5	104.0
AIR FLOW (Pa)	165.0	145.0	47.5
PRESS DROP (Inches)	0.66	0.58	0.19
WATER FLOW (L/s)	10.84	15.75	5.17
(USGPM)	172.0	250.0	82.0
ENT WATER (Deg C)	8.9	40.6	82.2
(Deg F)	48	105	180
LEAV WATER (Deg C)	17.0	36.4	71.1
(Deg F)	62.6	97.6	160
WATER FLOW (kPa)	22.08	24.3	25.8
PRESS DROP (Feet)	7.36	8.1	8.6
# OF COILS	2	2	2
# OF ROWS	6	8	2

NOTES

- 1) REFER TO MECHANICAL SPECIFICATION FOR DETAILS
- 2) VSD's SUPPLIED BY AHU MANUFACTURER
- 3) POOL QUALITY CONSTRUCTION W/ ALUMINIUM WASHDOWN LINER.
- 4) EPOXY COATING FOR CORROSION RESISTANCE



UNIT LEGEND

A - Access Plenum	61" Plenum, Door 24" W
B - Cooling Coil	FLUID Coil, Size 114" x 46.5", Qty 2
C - Access Plenum	28" Plenum, Door 24" W
D - Return Fan	Horizontal, Motor Behind, PL-3-600-1I, Qty 1, 20 HP
E - Damper Section	Damper, RA Location Roof, Size 43" x 112", OA Location Back, Size 112" x 42"
F - Pre Filter	PreFilter, Module 24" x 24", Front Loading, 4 Rows x 5 Coils
G - Heating Coil	FLUID Coil, Size 114" x 48", Qty 2
H - Heating Coil	FLUID Coil, Size 114" x 48", Qty 2
I - Access Plenum	48" Plenum, Door 24" W
J - Supply Fan	Horizontal, Motor Behind, PL-3-542-1I, Qty 1, 30 HP

ECO#:	REV:	NAME:	DATE:	DESCRIPTION:	PROJECT:	CO:	TAG:
ECO#:	REV:	NAME:	DATE:	DESCRIPTION:	Richmond Aquatics	UNITS:	AHU
ECO#:	REV:	NAME:	DATE:	DESCRIPTION:	Richmond Aquatics	INCHES:	DWG #