

City of Richmond Recycling  
and Solid Waste Management

# REPORT 2024

## EXPLORING NEW WAYS TO REDUCE WASTE



Environmental Programs is responsible for residential garbage and recycling services, including collection, drop-off services at the Richmond Recycling Depot, public spaces recycling and litter collection services.

With Council's leadership and commitment to strategic planning and policy, we strive to help create more sustainable waste management through our programs and services to support a circular economy. We believe that it is our responsibility to support our community and preserve our planet for future generations.

Through outreach and engagement, working with our residents and local businesses, and partnering with local agencies, we also strive to meet and exceed all regional waste diversion goals by continuously expanding our programs and service offerings.

# Contents

|            |  |           |
|------------|--|-----------|
| <b>1.0</b> | <b>Annual Outlook</b>                    | <b>3</b>  |
| 1.0        | Let's Rethink Waste                      | 5         |
| 1.1        | 2024 Top Accomplishments                 | 6         |
| 1.2        | Setting Goals                            | 8         |
| 1.3        | Inspiring Newcomers to Recycle           | 9         |
| <b>2.0</b> | <b>Tracking Our Progress</b>             | <b>11</b> |
| 2.1        | Diversion Statistics                     | 12        |
| 2.2        | Outreach and Customer Service Statistics | 20        |
| <b>3.0</b> | <b>Programs and Services</b>             | <b>27</b> |
| 3.1        | Program and Service Overview             | 28        |
| 3.2        | Blue Box and Blue Cart Programs          | 30        |
| 3.3        | Green Cart Program                       | 36        |
|            | Yard Trimmings Drop-off                  | 39        |
| 3.4        | Garbage Cart Program                     | 40        |
| 3.5        | Richmond Recycling Depot                 | 42        |
|            | Depot Map                                | 44        |
| 3.6        | Large Item Pick Up Program               | 46        |
| 3.7        | Public Spaces Programs                   | 48        |
| 3.8        | Outreach and Customer Service            | 50        |
| <b>4.0</b> | <b>Tips and Resources</b>                | <b>53</b> |
| 4.1        | Community Resources and Partnerships     | 54        |
| 4.2        | Banned and Hazardous Materials           | 56        |
| 4.3        | Recycling and Disposal Directory         | 58        |





# Exploring New Ways to Reduce Waste

Recycling is only one aspect of sustainable waste management. To support a circular economy, it's equally important to reduce waste overall.

The City of Richmond is focusing on continuous improvement to explore new ways to reduce waste, including introducing new programs and services that make it easy to repair, reuse, donate and repurpose household items. These measures support a circular economy by reducing reliance on raw materials and conserving natural resources.

Other key strategies in the City's Community Energy and Emissions Plan 2050 and Richmond Circular City Strategy include maximizing the value of resources and reducing carbon emissions, as well as encouraging responsible consumption and minimizing waste. These actions are part of the global effort to be more sustainable and reduce environmental impacts.

Towards this goal, the City advocates for partnerships and regulatory measures that reflect its strategic priorities. This includes implementing community engagement campaigns and educational outreach programs to raise awareness about its programs and services, as well as tips and other resources to encourage actions that increase recycling, ensure recyclables are being sorted correctly, minimize impacts on the environment and reduce waste generated in our community.

By collaborating with the community, Richmond aims to be a fully circular city by 2050.



**LET'S  
REDUCE  
REUSE  
RECYCLE**



# 1.0

## Annual Outlook

While the City of Richmond provides multiple programs, services and educational outreach opportunities, it takes community action to generate successful recycling and waste reduction outcomes.

Richmond residents with curbside collection have demonstrated their commitment to recycling, consistently achieving 79% waste diversion levels. However, there are always opportunities to improve the quality and quantity of recycling and help reduce waste overall.

In 2024, the City continued to explore new ways to leverage these opportunities and raise awareness about how to recycle correctly and reduce waste. Some of the key focus areas included creating a new program to support increased recycling in the commercial sector, expanding outreach to collaborate with community members who share an interest in sustainable waste management, and developing customized pilot programs and communication campaigns to help reduce waste and address challenges with waste that requires special handling.

Following the completion of the commercial recycling services review, the City launched a new Business Recycling Resources program for a one-year pilot that includes a toolkit to guide businesses through the steps of how to assess their waste, determine the right mix of recycling bins and create a Recycling and Waste Reduction Plan to help recycle correctly and reduce waste.

The program includes outreach by City staff to raise awareness about the new resources and why it is important to recycle, including regulatory requirements such as regional bans. The goals are to increase the commercial recycling rate, which is currently lower than residential recycling, and ensure that the commercial sector in Richmond is adhering to all regulatory requirements. The program has already reached more than 14,000 Richmond businesses through the door-to-door visits, phone calls, and promotion through various City channels and local associations.

*Continued >*

## Over the past year, Richmond remained focused on supporting a circular economy by encouraging community members to rethink waste.

Recognizing that recycling in multi-family complexes has a higher rate of issues with materials being recycled incorrectly, the City also began an assessment of its Recycling Champion program in 2024 and completed a refresh and relaunch that included recruiting residents to lead the program in their building. This outreach program is a collaborative process that supports the Recycling Champions with the tips, information and resources they need to help residents in their building recycle correctly.

The City also continued its pilot program to collect used cooking oil, fats and grease from multi-family complexes. Approved in 2022, the Multi-Family Grease Collection pilot was rolled out to six multi-family complexes with 934 units having access to participate in the program. In an effort to encourage usage, the City expanded the program in 2024 to include “hidden fats” such as butter, salad dressings, gravy and mayonnaise. This material expansion resulted in a 35% increase in the volume collected over the same period the year prior.

In addition to these initiatives to increase waste diversion and support recycling correctly, the City is also continuing to explore new ways to reduce waste to support Richmond’s Community Energy and Emissions Plan 2050 and the Richmond Circular City Strategy.

One of the new target areas in 2024 focused on reducing textile waste. Textile waste is increasing significantly due in large part to “fast fashion” that capitalizes on quick changing trends to fuel the manufacturing of low-quality textiles with quick production times, decreased durability and lower prices.

Textile waste includes residential and commercial fabrics; however, clothing represents more than 60% of textiles. Staff estimate Richmond clothing waste is about 1,800 tonnes per year. Not only is there significant growth in textile waste, there are limited options for recycling these materials. Extending the life of textiles through reuse, repair and repurposing is one of the key ways the City can help to reduce this waste.

On April 22, 2024, Council approved a textile waste reduction initiative, which includes a multi-faceted approach to increase collection opportunities, enhance education and outreach, address internal processes and advocate for a provincially regulated program to manage post-consumer textiles. In addition to its advocacy measures, the City also leveraged its “Let’s Rethink Waste” community education and outreach campaign with a focus on clothing and other textiles.

The City also hosted pop-up Reuse events at its popular Repair Fair events in the fall to provide opportunities to donate/swap clothing and other textiles and joined the Canadian Circular Textiles Consortium to collaborate with other interested organizations to help advance circular practices and foster collective actions to reduce textile waste nationwide.

As another measure to support a circular economy through repair and reuse initiatives, the City launched a Bike Reuse Pilot Program in August 2024. This one-year program is designed to promote reuse by refurbishing bikes and bike accessories collected at the Recycling Depot and then donating them back to the community. For more information about this pilot program, see page 25.

While residential and commercial recycling remains a significant portion of waste management in Richmond, the City also provides recycling and waste collection in public spaces. In 2024, the City introduced a pilot program for dog waste, which involved installing dedicated red bins for dog waste within the off-leash dog areas at McLean Neighbourhood Park, Aberdeen Neighbourhood Park and Steveston Community Park. From the launch of the program in March to the end of 2024, an estimated 11,000 kg of dog waste has been diverted from the landfill, averaging to approximately 1,000 kg per month.

Together, these expanded services and new programs are designed to target key areas for improving recycling and reducing waste in Richmond as part of supporting a circular economy and more sustainable waste management.





## LET'S RETHINK WASTE

Changing our habits to think differently about purchases, avoiding unnecessary waste and finding ways to reuse and recycle products contribute directly to positive outcomes like reducing reliance on raw materials.

Ultimately, it's about shifting to a circular economy, where the materials we use stay in circulation to be used, reused or repaired, and recycled multiple times into new products.

### TOP TIPS TO REDUCE WASTE:

- Avoid single-use items – choose reusable instead
- Choose products with minimal packaging
- Buy, sell, trade or donate household items
- Choose products with recycled content
- Repair products when possible
- Rethink – take a moment to assess:
  - Do I need this item?
  - Will it create unnecessary waste?
  - How can it be reused or recycled?

Together we can change habits and make better choices that support a circular economy.

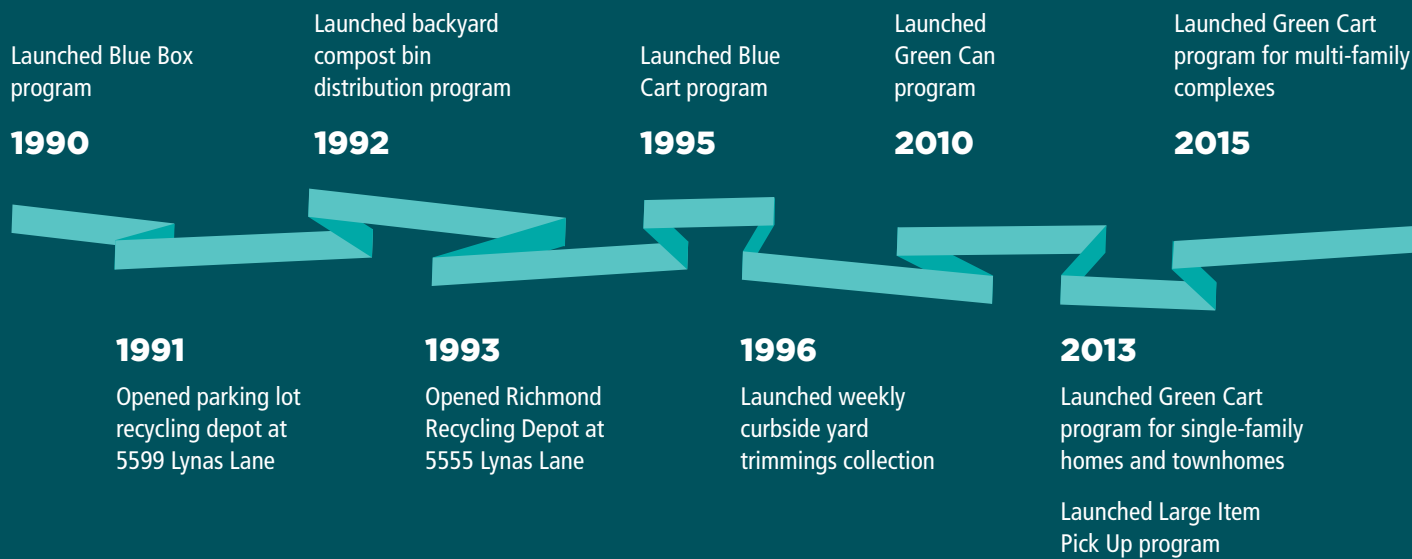


# 1.1

## 2024 Top Accomplishments

This report showcases some of the key achievements in 2024 and looks back on the City’s top accomplishments over the past 30-plus years.

### RECYCLING MILESTONES



**1 LAUNCHED A BIKE REUSE PILOT PROGRAM**

Program supported the repair of 10 donated bikes, with 445 spare parts and accessories recovered for reuse.

**2 IMPLEMENTED BUSINESS RECYCLING RESOURCES PROGRAM PILOT PROJECT**

Provided support and resources to help Richmond businesses increase recycling and manage their waste.

**3 WON INTERNATIONAL AWARDS FOR TWO CAMPAIGNS**

"Rethink Waste: Think Tank & Ideas Hub" and "Richmond's Single-Use Plastic Ban" received Gold Quill awards from the International Association of Business Communicators.

**4 EXPANDED GREASE COLLECTION PILOT PROGRAM**

Added fats to the program and engaged with participating complexes, resulting in an overall increase in volume collected.

**5 ADVANCED TEXTILE WASTE REDUCTION AND AWARENESS**

Joined a national textile consortium and expanded Repair Fairs with teddy bear repair and sewing circles, resulting in 395 pieces fixed at 11 events.

**6 HOSTED TWO SUCCESSFUL SHRED-A-THON EVENTS**

Helped residents shred important confidential documents and recycle 11.62 tonnes of paper.

**7 IMPLEMENTED DOG WASTE COLLECTION PILOT PROJECT**

Added seven containers at three dog parks to divert and properly dispose of dog waste at the Iona Wastewater Treatment Plant.

**8 REFRESHED THE RECYCLING CHAMPION PROGRAM**

Updated outreach materials and hosted two workshops to recruit, engage and support volunteers in multi-family complexes with the goals of increasing recycling and reducing contamination.

Introduced *Single-Use Plastic and Other Items Bylaw No. 10000*

Expanded Large Item Pick Up Program

Expanded hours and items accepted at Richmond Recycling Depot

**2019**

Adopted *Single-Use Plastic and Other Items Bylaw No. 10000*

Extended Recycling Depot operations to 7 days a week and expanded items accepted

**2021**

Earned national awards for the Rethink Waste and Single-Use Plastic Ban engagement campaigns

**2023**

**2016**

Launched biweekly Garbage Cart program

**2020**

Renovated Recycling Depot and expanded items accepted

**2022**

Implemented *Single-Use Plastic and Other Items Bylaw No. 10000*

Expanded items accepted at Recycling Depot

**2024**

Launched a business recycling pilot program  
Earned international awards for two campaigns

# 1.2

## Setting Goals

Richmond's long-term goal is to support a circular economy through sustainable waste management, and the annual goals listed here are designed to help achieve this target.

### 1 ENHANCE TEXTILE RECYCLING

Incorporate textile messaging into "Rethink Waste" outreach, review textile use at City events and install textile donation bins at the Recycling Depot.

### 2 USE DATA TO IMPROVE RESIDENT RECYCLING

Explore the use of artificial intelligence on collection trucks to collect data and enable timely recycling feedback to residents.

### 3 ADDRESS SMALL-SCALE MULTI-UNIT HOUSING

Develop guidelines and billing system for single-family properties with multiple units.

### 4 EVALUATE BIKE REUSE PILOT PROGRAM

Assess pilot program introduced in 2024 and bring forward recommendations for next steps.

### 5 ASSESS BUSINESS RECYCLING PROGRAM

Report on development and implementation of the Business Recycling Resources Program, a one-year pilot project, and make recommendations for next steps.

### 6 REDUCE ILLEGAL DUMPING

Explore camera technologies to reduce illegal dumping in public spaces.

### 7 REFRESH CORPORATE RECYCLING PROGRAM

Update WeRecycle program to encourage greater participation and improve recycling quality.

### 8 CONTINUE COMMUNITY ENGAGEMENT

Continue engagement efforts to encourage residents to recycle correctly, rethink waste and shift to a circular economy where materials we use stay in circulation.





# 1.3

## Inspiring Newcomers to Recycle

Newcomers to Canada face many challenges including adapting to new languages, regulations and culture. Even everyday tasks, such as managing household waste, can be different.

That's why S.U.C.C.E.S.S. and the City of Richmond partner to help newcomers learn the do's and don'ts of recycling – including City-led workshops and tours of the Richmond Recycling Depot, where newcomers become recycling experts.

"We've been benefitting from this program for so many years," says April Toh, an instructor with LINC (Language Instruction for Newcomers to Canada), a program operated by S.U.C.C.E.S.S. to teach newcomers English and important skills to help navigate day-to-day life. "Our newcomers are so appreciative of the opportunity to learn about recycling."

In the last three years alone, Richmond has provided workshops and/or Recycling Depot tours to nearly 1,000 newcomers. The latest group of LINC participants recently visited the Recycling Depot, where they first learned the "why, how and what" about recycling in a fun, interactive workshop, before touring the Recycling Depot to see firsthand the wide range of items that can be recycled there.

As part of the workshop and tour, City staff members do more than just explain what goes into the bins; they provide the bigger picture about why it is important to keep waste out of the landfill and emphasize that the success of recycling programs starts at home. They also explain that when recyclables are placed in the wrong bin or put in the garbage, it is considered contamination. The City may be fined or the City's contractors may not collect the bins as recycling processors will not accept contaminated recycling loads.

The latest LINC group mostly consisted of newcomers from China, but also included newcomers from Korea and Russia. They were eager to learn, and the in-person tour provides opportunities to ask questions with the support from S.U.C.C.E.S.S. providing translation assistance on the spot. They enthusiastically took on a team challenge to sort a large bag of disposable items into the right bin.



Quick learners, the group scored well, with only a few misplaced items. The learning is also assisted by fun animated videos, with plenty of tips about avoiding common mistakes such as not properly rinsing food containers, failing to flatten cardboard boxes or stacking items together in your Blue Box.

Another common error is buying bags labelled compostable or bio-degradable to use in disposing of food scraps in the Green Cart. These bags aren't accepted at Richmond's organic waste processor as they take too long to decompose.

"I really enjoyed the opportunity to learn about recycling," said newcomer Grace Shin. "I feel a little bit guilty because I was doing some things wrong, but after today I think we can do a better job of recycling."

The newcomers learned some easy tips to make recycling easier, such as using the Richmond Recycling app to search how and where to recycle thousands of items, plus set up reminders about garbage and recycling pick-up dates. The group also came alive when shown samples of new products that had been created from recycled materials.

"This is so cool," said Shin, handling a fabric lanyard made from recycled plastics. The group was also fascinated by crown moulding made of recycled Styrofoam and news that the Minoru Oval track is made of recycled rubber tires.

While the newcomers said they had recycling programs in their homelands, the opportunities in Richmond are much broader, particularly thanks to the ability to take so many items to the Recycling Depot. They all welcomed the opportunity to learn more about Richmond's programs.

"I thought I knew everything (about recycling)," said fellow newcomer Jenny Shan. "But I didn't know so many things could be recycled." Shan said she not only plans to be a better recycler, but will share what she learned with her neighbours.

S.U.C.C.E.S.S. is a key partner in Richmond's community outreach program. Richmond also partners with schools and Scouts Canada for workshops and/or Depot tours to raise awareness about how to recycle correctly and reduce waste.

**All Richmond residents and community groups can take advantage of free in-person and virtual workshops on recycling, as well as tours of the Recycling Depot. Residents can also become community champions, helping to empower themselves and neighbours to recycle correctly. Learn more at [richmond.ca/recycle](https://richmond.ca/recycle).**





# **EXPLORING NEW WAYS TO REDUCE WASTE**

# 2.0

## Tracking Our Progress

As part of tracking its progress, the City of Richmond collects data across a broad spectrum of programs, services and activities. This data shows changes in resident recycling and waste diversion over the years, and how new programs are contributing to a circular economy.

The mix of data reported reflects the amount of recycling handled through residential collection programs, the usage and types of materials dropped off at the Richmond Recycling Depot, and a breakdown of the different types of recyclable materials that are being diverted from the landfill through multiple recycling programs.

As well, the City has a number of outreach initiatives that are aimed at increasing awareness and understanding about how to recycle correctly and consistently, and how to reduce waste overall.





2.1

## Diversion Statistics

Richmond residents in single-family homes diverted 79.2% of their waste from the landfill in 2024.

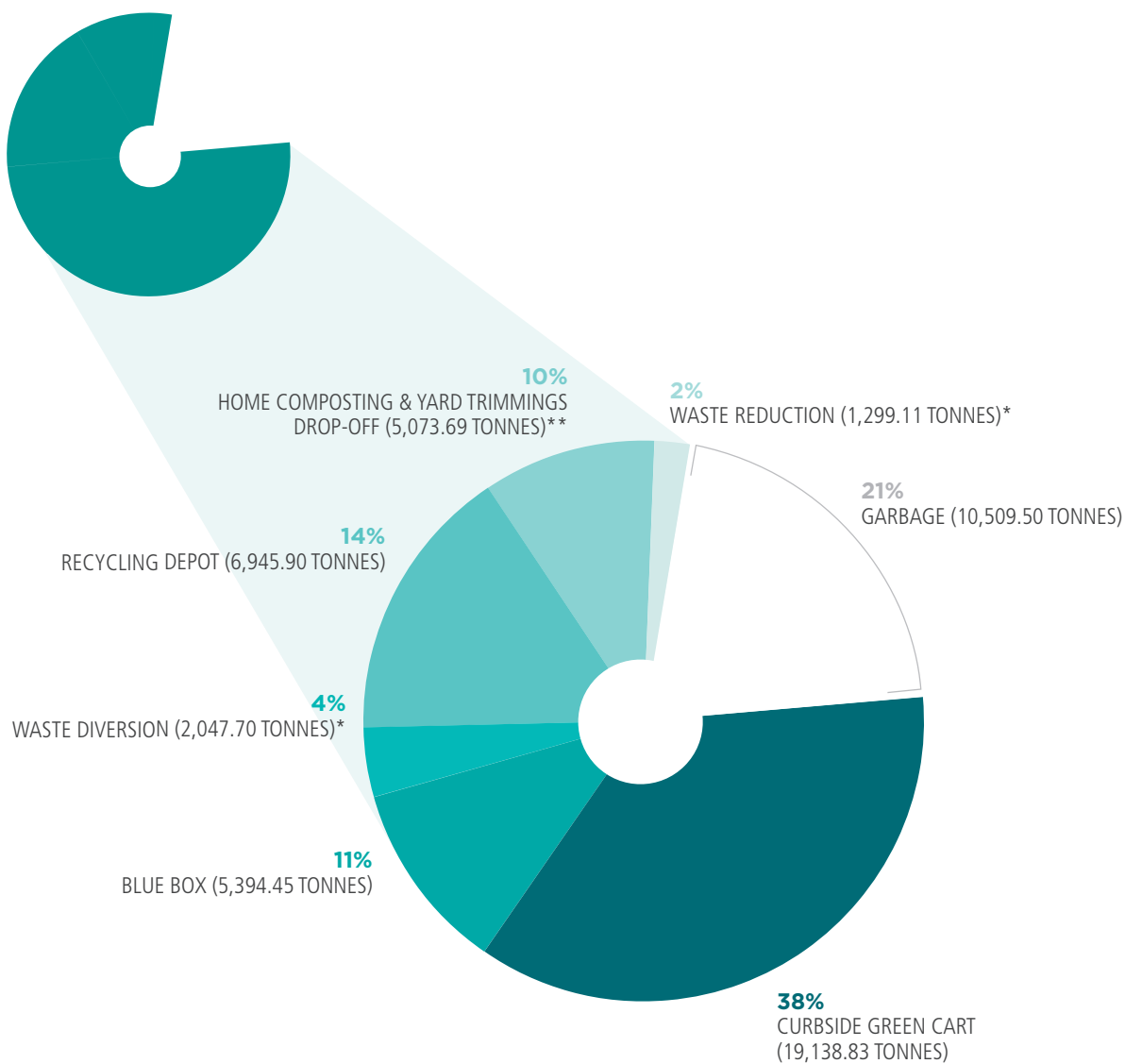
79.2%

WASTE DIVERSION  
ACHIEVED!

## SINGLE-FAMILY RECYCLING IN 2024

Residents took advantage of a variety of programs to divert **79.2% of their waste** from the landfill in 2024.

Residents were able to achieve this waste diversion through a number of recycling and waste reduction opportunities, including curbside and Richmond Recycling Depot collection as well as composting programs.

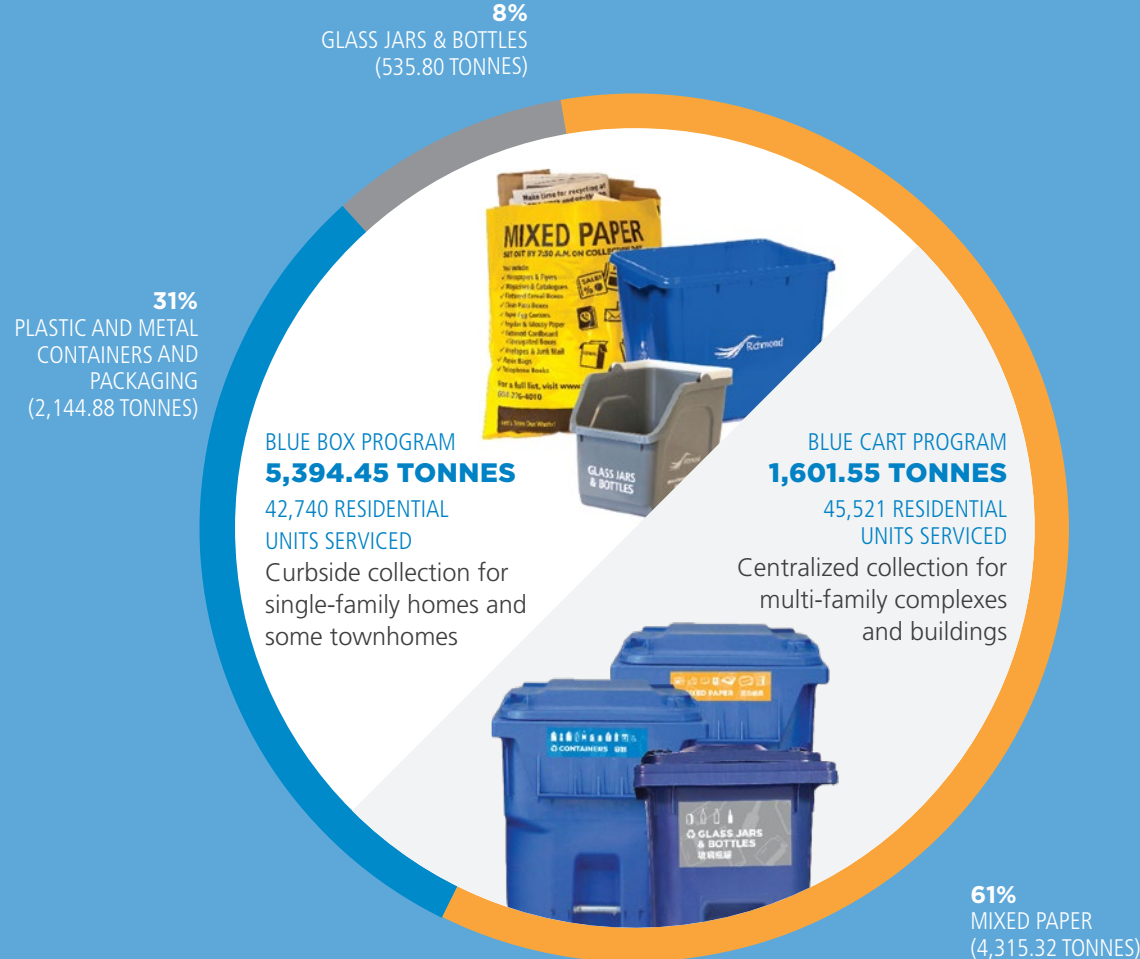


\* Estimated

\*\* Includes estimates for home composting, tree chipping and leaf drop-off programs.

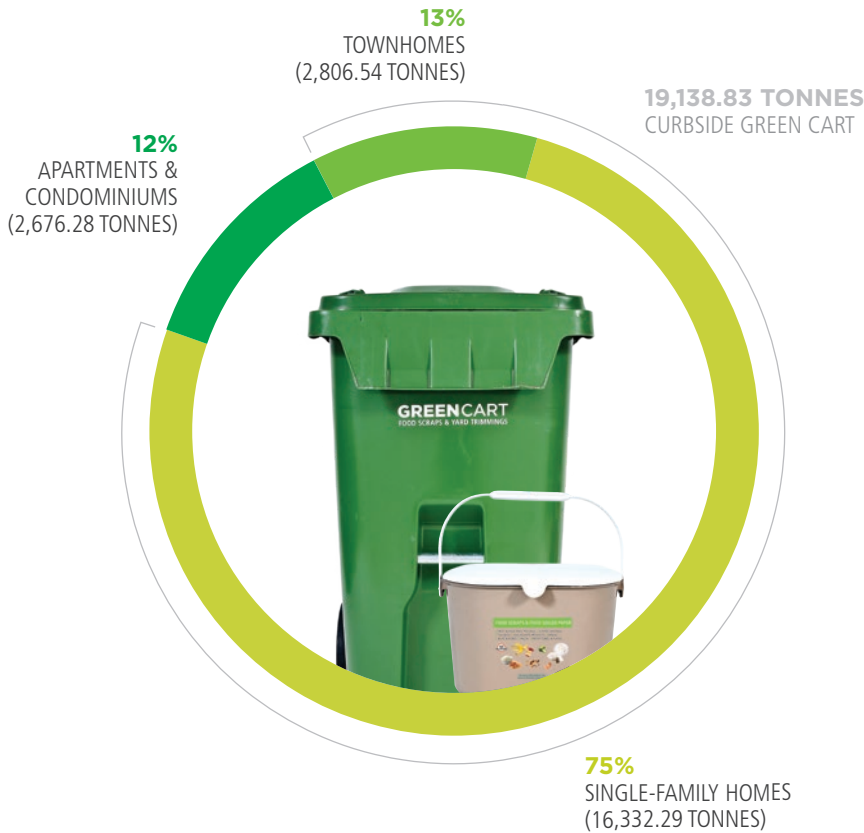
# BLUE BOX AND BLUE CART PROGRAMS RECYCLING MIX IN 2024

Through the Blue Box and Blue Cart programs, residents recycled a total of **6,996.00 tonnes** of recyclable materials.





## RESIDENTIAL GREEN CART RECYCLING IN 2024

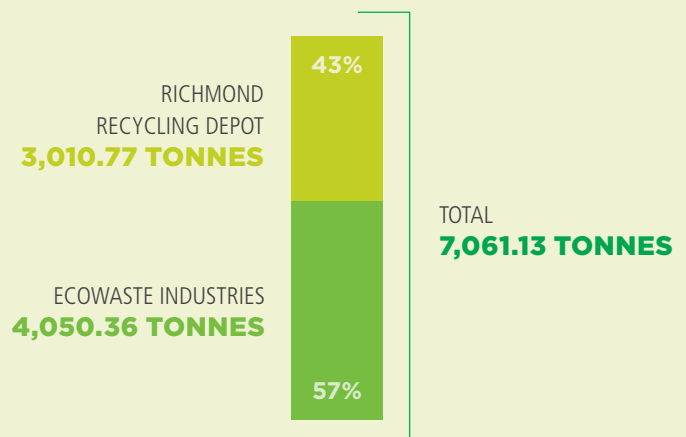


Residents diverted **21,815.11 tonnes** of food scraps and yard trimmings from the landfill in 2024 to be composted into new resources.

Richmond's Green Cart program is for residents in single-family homes, townhomes, apartments and condominiums.

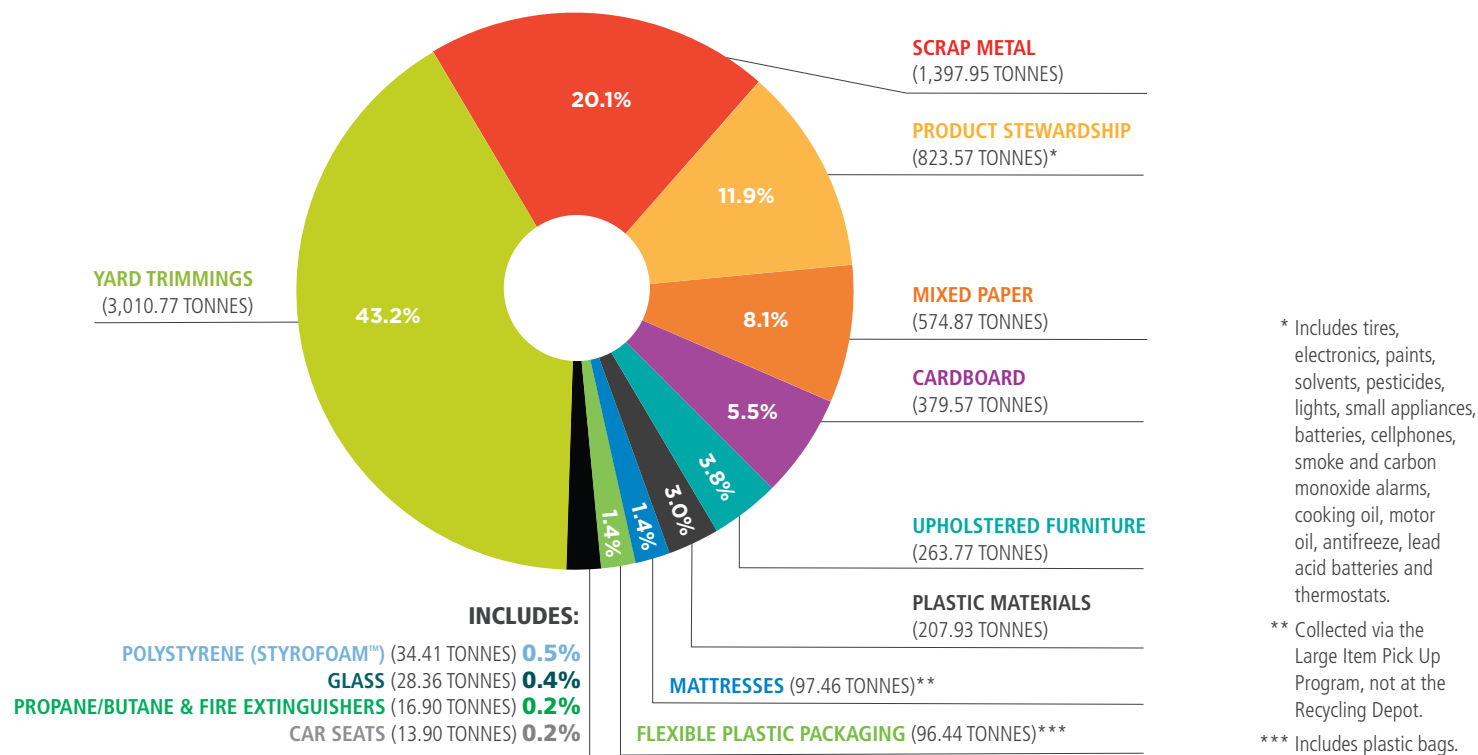
**76,673** residential units received weekly collection in 2024.

In 2024, **7,061.13 tonnes** of yard trimmings were collected at the Richmond Recycling Depot and through the Ecowaste residential and commercial drop-off service.

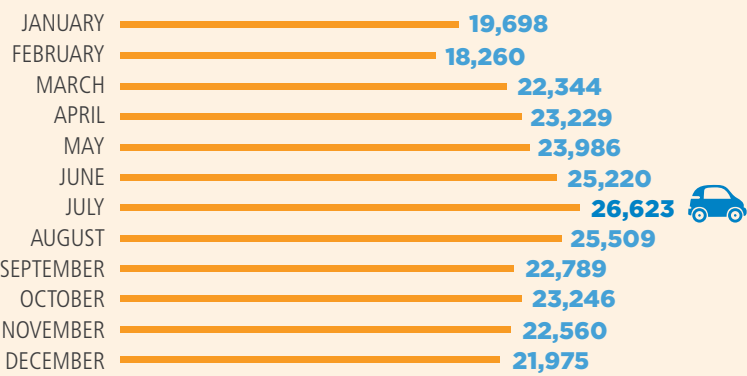


# MATERIALS COLLECTED AT THE RICHMOND RECYCLING DEPOT

In 2024, **6,945.90 tonnes** of recyclable materials were collected at the Recycling Depot.



# MONTHLY VEHICLE VISITS TO THE RICHMOND RECYCLING DEPOT



In 2024, there were **275,439** vehicle visits to the Richmond Recycling Depot, an average of **755** visits per day.

## RECYCLE MORE AT THE RICHMOND RECYCLING DEPOT

Open seven days a week, the Recycling Depot provides a convenient one-stop recycling service. The City continues to increase the list of accepted items to support waste diversion.



**PAINT**  
253,584  
EQUIVALENT  
LITRES



**AEROSOLS**  
7,520 EQUIVALENT  
LITRES



**SOLVENTS & PESTICIDES**  
16,880 EQUIVALENT  
LITRES



**CFLS**  
892 BOXES



**FLUORESCENT TUBES**  
4' – 637 BOXES  
8' – 80 BOXES



**COOKING OIL**  
11.84 TONNES



**SMALL APPLIANCES**  
207.97 TONNES



**BATTERIES & CELLPHONES**  
21.70 TONNES



**LEAD ACID BATTERIES**  
27.68 TONNES



**ELECTRONICS**  
285.27 TONNES



**SMOKE & CO ALARMS**  
0.62 TONNES



**MOTOR OIL & ANTIFREEZE**  
67.73 TONNES



**TIRES**  
49.33 TONNES



**THERMOSTATS**  
0.13 TONNES



## LARGE ITEM PICK UP IN 2024

**43,908 residential units** received the service through their curbside programs.



**12,879**  
REQUESTS  
FOR SERVICE

**662.9**  
TONNES  
COLLECTED

**492.49**  
TONNES  
RECYCLED



**3,458**  
MATTRESSES &  
BOXSPRINGS



**352**  
WASHERS & DRYERS



**169**  
TELEVISIONS



**591**  
FRIDGES & FREEZERS



**285**  
BARBECUES



**179**  
DISHWASHERS



**2,774**  
UPHOLSTERED FURNITURE



**226**  
STOVES &  
MICROWAVES



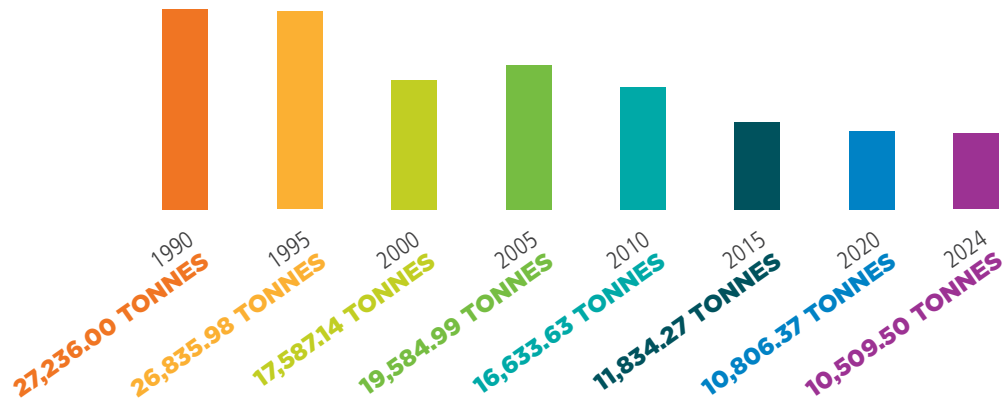
**1,743**  
OTHER RECYCLABLE  
ITEMS

**5,544**  
NON-RECYCLABLE  
HOUSEHOLD ITEMS  
COLLECTED FOR SAFE  
HANDLING AND DISPOSAL

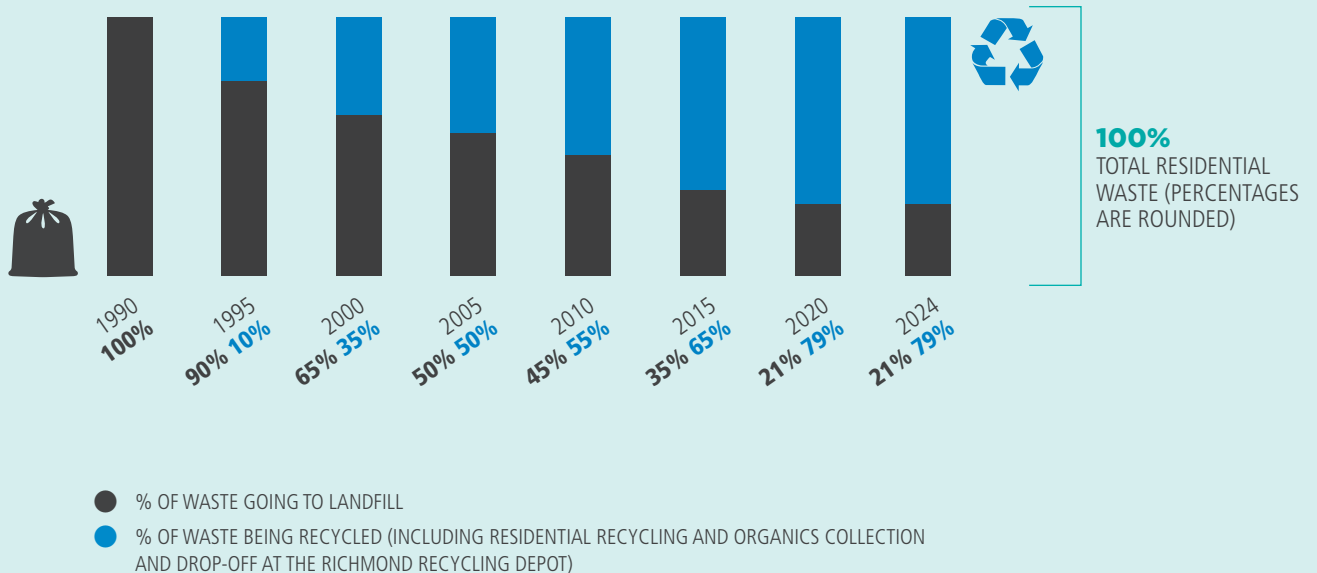
## FROM GARBAGE DISPOSAL TO DIVERSION

**35,163** residential units received Garbage Cart service in 2024.

### SINGLE-FAMILY HOMES GARBAGE COLLECTION OVER 20-PLUS YEARS:



### SINGLE-FAMILY HOMES DIVERSION OVER TIME:







# 2.2

## Outreach and Customer Service

Statistics in this section are related to our successful outreach and customer service programs, which are designed to turn education and information into action.

### CUSTOMER SERVICE AND OUTREACH

Richmond's Environmental Programs staff share information, tips and resources by phone as well as through outreach events and on the website.

**16,829**

**CUSTOMER SERVICE  
CALLS SUPPORTED**

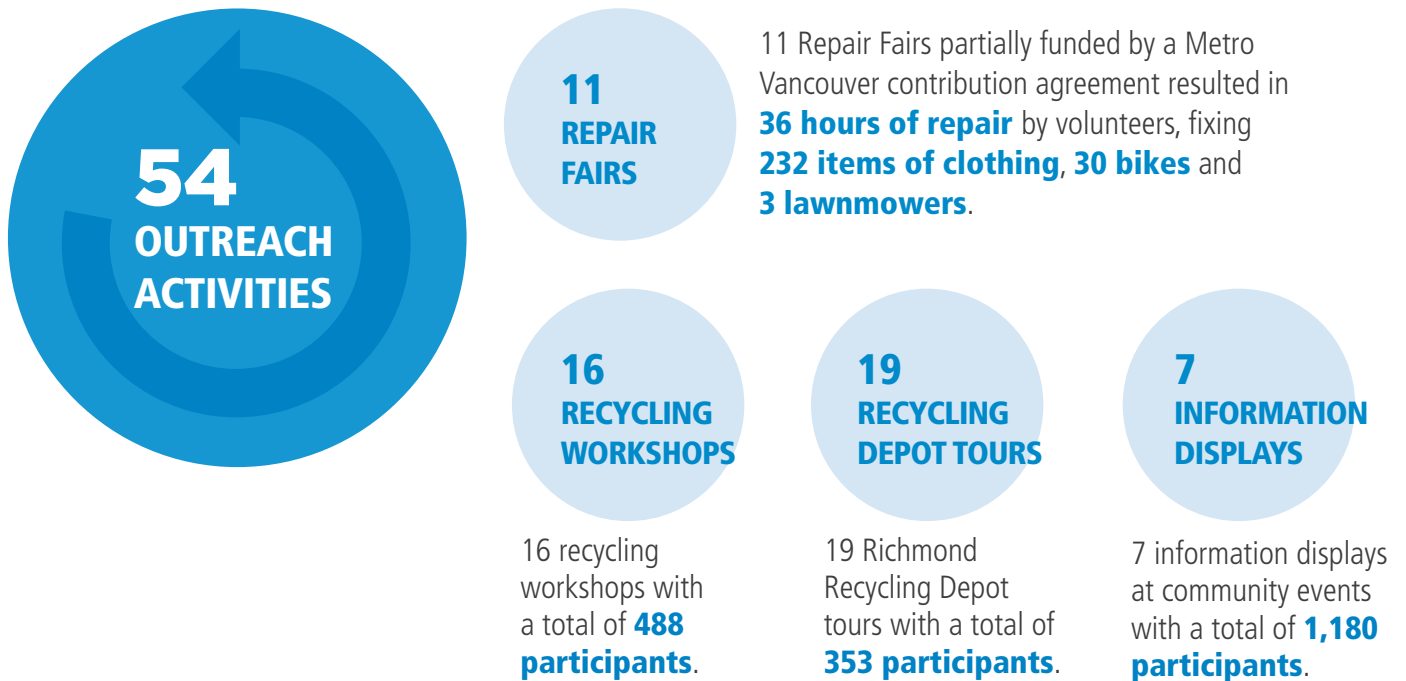
**2,416  
ATTENDEES**

**2,416 attendees** for  
**54 outreach activities**  
on various topics.

**1,532  
HOURS**

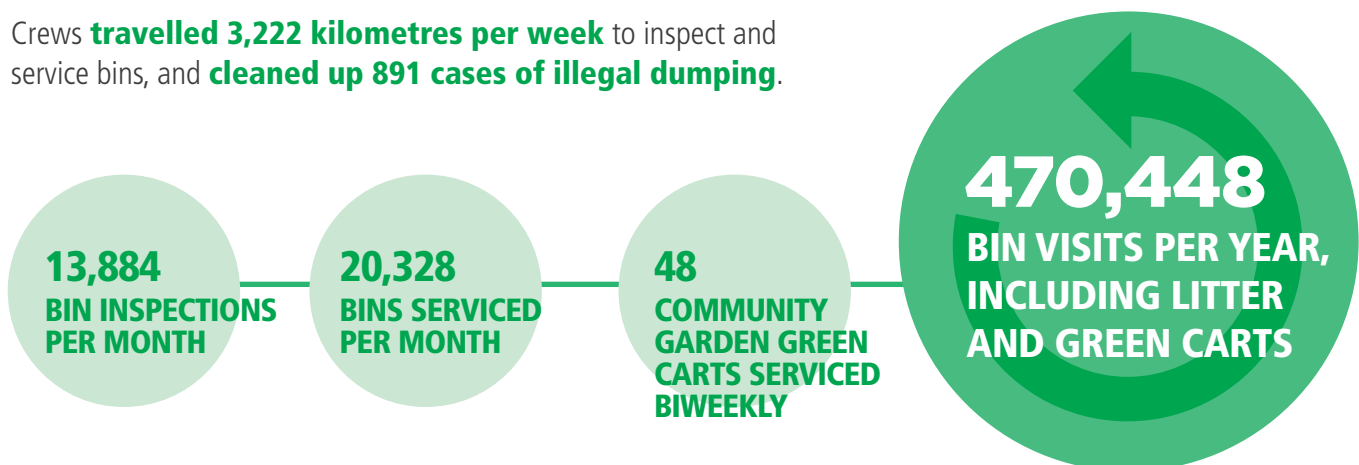
**1,532 participant  
hours** of youth  
volunteering and training.

## COMMUNITY OUTREACH



## GARBAGE, LITTER AND COMMUNITY GARDEN COLLECTION

Crews **travelled 3,222 kilometres per week** to inspect and service bins, and **cleaned up 891 cases of illegal dumping**.



## COMPOST BINS, GARBAGE TAGS AND VOUCHERS



## STUDENT OUTREACH

### GREEN AMBASSADOR (GA) YOUTH PROGRAM

**9 special events** were supported by GAs, for a total of 922 hours.

**922 HOURS**

**4 GA team-led meetings and planning sessions** were held, for a total of 90 hours.

**90 HOURS**

**144 GREEN AMBASSADORS WITH 1,532 HOURS OF VOLUNTEERING & TRAINING**

**520 HOURS**

**10 GA sessions for training and networking** were held, for a total of 520 training hours.

Richmond's friendly and helpful Green Ambassadors are a common sight at events and festivals in the community, supporting increased recycling and teaching members of the public how to sort waste correctly.





## ONLINE SEARCH AND TIPS TOOLS



The Richmond Recycling app has been installed **15,344 times** to date, and used a total of **105,355 times**.

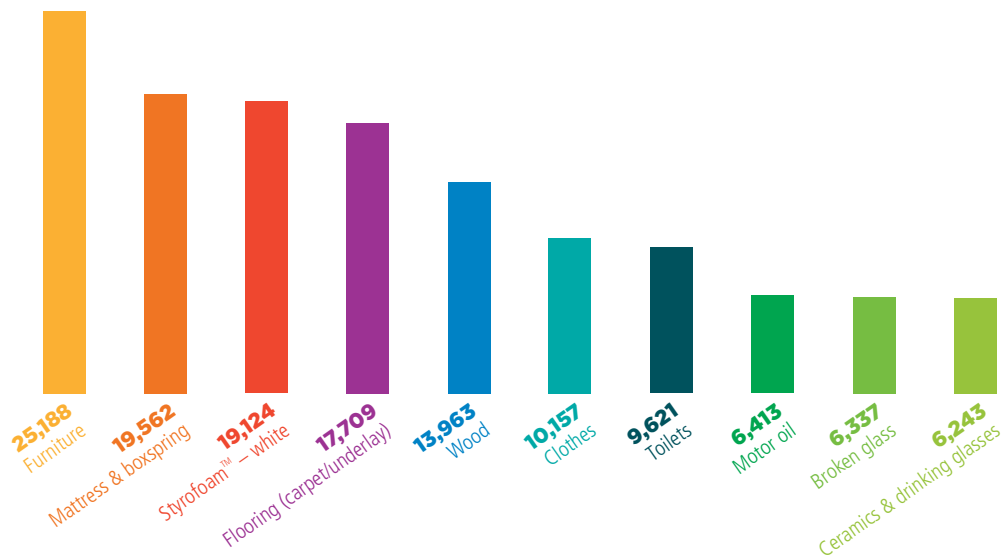
**24,342**  
REMINDERS

**21,514**  
PDF CALENDAR  
DOWNLOADS

**10,864**  
RECYCLING  
GAMES PLAYED

**41,043**  
ANNUAL RECYCLING  
WIZARD SEARCHES

### TOP MATERIALS SEARCHED ON THE RECYCLING WIZARD – ALL TIME





Samples of free business resources provided by Richmond's award-winning Single-use Plastic Ban campaign.

## AWARD-WINNING COMMUNITY ENGAGEMENT

The City of Richmond received two international Gold Quill Awards of Excellence from the International Association of Business Communicators (IABC) for its communication and community engagement to increase awareness and compliance with the Single-Use Plastic Ban, and for its Rethink Waste Think Tank engagement campaign to generate ideas for reducing waste.

IABC's Gold Quill Awards have long been established as the pinnacle achievement for professional communicators across the globe. Rigorously evaluated by seasoned professionals, they endow significant credibility to the winning individuals and teams. Receiving a Gold Quill places the City of Richmond among some of the best communicators in the field from around the world. The two winning programs were also recognized in 2023 with national Silver Leaf Awards from the IABC.

### RETHINK WASTE THINK TANK & COMMUNITY IDEAS HUB

Richmond implemented a multi-year communication and engagement campaign to support the City's goals to reduce waste and support a circular economy. Residents were encouraged to share their waste reduction ideas as part of a "Think Tank" and viable ideas were used to create a Community Ideas Hub. The campaign far exceeded expectations, generating more than 300 ideas with practical tips and resources to support sustainable waste management.

### SINGLE-USE PLASTIC BAN

Richmond implemented a multi-year communication and engagement campaign as part of introducing a new bylaw banning single-use plastic items to support businesses in the transition, increase awareness about the new bylaw and promote reusable options in the community, with a goal to reduce unnecessary waste and pollution. The successful campaign resulted in an informed and engaged business community, broad awareness about the new ban and the benefits of choosing reusable options, and a high compliance rate when the bylaw was implemented. This has resulted in reduced use of single-use plastic items and reduced waste going to the landfill.





## TESTING NEW PROGRAMS TO REDUCE WASTE

Richmond's commitment to continuous improvement includes trying new ways to divert and reduce waste. This often involves implementing pilot programs to test how different programs serve the community and support the City's goals in the Community Energy and Emissions Plan 2050 and Richmond Circular City Strategy.

In 2024, the City coordinated several pilot programs, each with targeted outcomes that will be assessed to determine whether these initiatives are effectively meeting the needs of the community and supporting the City's goals and objectives. The summary below outlines two of the pilot programs and some of the recorded outcomes to date.



### BUSINESS RECYCLING RESOURCES PROGRAM

This comprehensive program includes a mix of resources designed to support increased recycling in the commercial sector, which currently lags behind residential recycling. The program includes a mix of resources, such as toolkits to guide business in assessing their recycling requirements, tips for implementing expanded recycling options and guides for preparing a Recycling and Waste Reduction Plan. City staff also provide coaching and on-site assistance with waste audits.

Based on preliminary feedback from business, staff have identified a need to communicate directly with property managers as they often control waste management contracts for businesses and malls. As such, staff are in the process of building a new toolkit section for property managers and reaching out directly to property management agencies operating in Richmond. In 2025, the City will also host educational workshops for businesses, covering topics such as How to Contract a Waste Hauler and Creating Recycling and Waste Reduction Plans.

There will be a full evaluation of the program after it has been implemented for a year. During this time, staff will engage with businesses to assess participation and effectiveness, and gather overall feedback. Once the evaluation is complete, staff will report back to Council with recommendations for next steps.

**14,000+  
BUSINESSES  
REACHED IN  
FIRST 8 MONTHS**

### BIKE REUSE PILOT PROGRAM

While the City has offered free bike repair through its highly successful Repair Fair events, staff identified an opportunity to reduce waste and support the community through a Bike Reuse Pilot program.

This one-year pilot program is designed to foster and promote reuse, with the aim to refurbish bikes and bike accessories collected at the Recycling Depot to a safe and dependable standard and donate them to Richmond residents facing ongoing financial hardship. The pilot launched August 23, 2024 and in the first four months of the pilot, 61 bikes were collected at the Recycling Depot and through Richmond's Large Item Pick Up program. Of these, 10 bikes (16%) were fully repaired and donated back to the community. From the remaining collected bikes and bike accessories, 445 bike parts and bike accessories were recovered for reuse.

The Pedal Foundation is contracted to assess, repair, refurbish and redistribute appropriate bikes and bike accessories to the Richmond community. This pilot program will be reviewed at the end of its one-year term in 2025 to determine the viability of continuing this service.

**61  
USED BIKES  
COLLECTED IN  
FIRST 4 MONTHS**





**LET'S  
RECYCLE  
CORRECTLY**

# 3.0

## Programs and Services

Richmond residents in single-family homes divert most of their waste, and recycling is increasing in townhomes and other multi-family complexes.

To support residents and their commitment to recycling, Richmond continues to expand services to help residents reduce their garbage and create incentives to promote increased recycling. Green Cart and Blue Box/Blue Cart recycling remain core services to help residents recycle. Residents can also use the Large Item Pick Up program or bring a growing list of recyclable items to the Richmond Recycling Depot and other drop-off facilities.

Richmond works with residents, industry partners, product stewardship groups and businesses to achieve its goal to support a circular economy by implementing sustainable waste management. Through partnerships and community engagement, Richmond's commitment to continuous improvement results in enhanced services to benefit residents.

The City is contractually required to collect residential recycling on behalf of Recycle BC and, in return, receives incentives to help reduce recycling costs for residents. However, the City must also comply with Recycle BC's standards regarding the quality of recycling. If banned items are found in the garbage or contamination is found in recycling, the City can be charged fines and other penalties. These requirements are based on the City's *Solid Waste and Recycling Regulation Bylaw No. 6803*, contract requirements with Recycle BC and organics processing facilities, and Metro Vancouver disposal bans for items that must be recycled as they are not permitted in the garbage.



# 3.1

## Program and Service Overview

Richmond delivers a wide range of recycling and waste management services for residents to ensure that all waste is managed safely and efficiently. The following page summarizes the key recycling and waste management services offered through the City of Richmond.



## RESIDENT COLLECTION AND RECYCLING SERVICES



### BLUE BOX PAGE 30

Weekly curbside collection for paper, newsprint, glass bottles and glass jars, plastic containers, empty aerosol cans, plastic/paper drink cups, spiral wound containers, and tin and aluminium containers. This program is provided to single-family homes and townhomes with curbside pickup.



### GARBAGE CART PAGE 40

Biweekly collection of garbage, not including banned items such as hazardous waste and materials that can be recycled, is available to residents in single-family homes and some townhomes. Garbage Tags and Disposal Vouchers for the Vancouver Landfill provide options for disposal of additional garbage.



### BLUE CART PAGE 30

Weekly centralized collection for paper, newsprint, glass bottles and glass jars, plastic containers, empty aerosol cans, plastic/paper drink cups, spiral wound containers, and tin and aluminium containers. This service is provided to townhomes and multi-family complexes with a common recycling room.



### RICHMOND RECYCLING DEPOT PAGE 42

Accepts products ranging from yard trimmings and household items to hazardous materials and take-back program products. This service is available to all residents and in limited quantities to commercial operators. Backyard compost bins, rain barrels, and Garbage Tags and Garbage Disposal Vouchers for the Vancouver Landfill are also for sale.



### GREEN CART PAGE 36

Weekly collection for foods scraps and yard trimmings. This program is provided to residents in single-family homes, townhomes and multi-family complexes.



### LARGE ITEM PICK UP PAGE 46

Residents with the City Blue Box and/or City Garbage Cart program can arrange for collection of large household items.



### BACKYARD COMPOSTING PAGE 39

Support for residential composting includes the sale of backyard compost bins and a composting demonstration garden. These services are available to all residents.

## PUBLIC SPACES AND OUTREACH SERVICES



### PUBLIC SPACES AND EVENT RECYCLING PAGE 48

Recycling bins in the community make it easy to recycle on the go, such as in parks, at community centres, in the Steveston business district and at Canada Line stations and Richmond central bus stops. Richmond supports community events by loaning garbage and recycling bins for local events at no charge.



### LITTER COLLECTION PAGE 49

Litter Attendants are on the road seven days a week to inspect or service garbage and recycling bins almost 7,900 times each week throughout the city. They also collect additional litter along the way to help maintain a clean and livable community for Richmond residents.



### COMMUNITY AND SCHOOL ENGAGEMENT PAGE 50

Through partnerships with students, teachers and the School District, Richmond delivers educational workshops, awareness programs and volunteer opportunities to increase understanding of recycling and the benefits of reducing waste.





# 3.2

## Blue Box and Blue Cart Programs

Richmond's Blue Box and Blue Cart recycling programs provide convenient collection of a wide variety of materials, including mixed paper, plastic containers, paper and plastic drink cups, empty aerosol cans and spiral wound cans like frozen juice concentrate containers as well as glass bottles and glass jars.

Richmond's Blue Box program for door-to-door curbside collection includes a Blue Box for containers, yellow Mixed Paper Recycling Bag for paper and small, flattened cardboard items, and a grey Glass Recycling Bin for glass bottles/jars. The Blue Cart program for centralized collection has separately labeled carts for containers, mixed paper and glass.

It is important to ensure materials are sorted correctly into the proper recycling receptacles. For example, recyclables must be placed individually in bins – not stacked, nestled or in plastic bags. Glass bottles/jars must be placed in the Glass Recycling Bin/Cart – not the Blue Box or Containers Recycling Cart.

Also, some items are not accepted in the Blue Cart/Blue Box program, such as non-packaging plastics like toys and laundry baskets, hazardous items like butane cylinders, propane tanks and batteries, and non-packaging metal items like scissors and pans. These items are accepted at the Richmond Recycling Depot.

## CONTAINER RECYCLING: BLUE BOX/CONTAINERS RECYCLING CART



### ✓ ACCEPTED

#### Metals

- ✓ Aerosol cans (empty) & caps (food items, air fresheners, shaving cream, deodorant, hairspray)
- ✓ Aluminium cans & lids
- ✓ Aluminium foil & foil containers (foil wrap, pie plates, food trays)
- ✓ Metal storage containers (such as for candy)
- ✓ Tin cans & lids

#### Paper

- ✓ Paper food containers & cartons
- ✓ Paper cups & lids, plates & bowls
- ✓ Paper garden pots & trays
- ✓ Spiral wound paper cans & lids (frozen juice, potato chips, cookie dough, coffee, nuts, baby formula)

#### Plastic

- ✓ Plastic bottles & caps (food items, condiments such as ketchup & mustard, dish soap, mouthwash, shampoos, conditioners)
- ✓ Plastic containers, trays & caps (bakery & deli foods)
- ✓ Plastic cups & lids
- ✓ Plastic food storage containers
- ✓ Plastic garden pots & trays
- ✓ Plastic hangers
- ✓ Plastic jars & lids
- ✓ Plastic microwavable bowls, cups & lids
- ✓ Plastic plates & bowls
- ✓ Plastic straws, utensils and stirsticks
- ✓ Plastic tubs & lids (margarine, spreads, dairy products such as yogurt, cottage cheese, sour cream, ice cream)

### ✗ NOT ACCEPTED

#### Take to Richmond Recycling Depot

- ✗ Aerosol cans with hazardous materials (spray paint)
- ✗ Butane cylinders
- ✗ Containers for motor oil, vehicle lubricant or wax products
- ✗ Plastic bags & overwrap
- ✗ Polystyrene (Styrofoam™) packaging
- ✗ Propane tanks

#### Repurpose, Sell, Share or Put in Garbage

- ✗ Ceramic plant pots
- ✗ Compostable/biodegradable plastic bags & containers
- ✗ Foil-lined cardboard lids from take-out containers
- ✗ Garden hoses
- ✗ Plastic string or rope

## TIPS TO RECYCLE CORRECTLY



Place materials separately in the bins – don't put recyclables into plastic bags. Bagged items will go in the garbage.



Avoid stacking or nestling items together, instead place them separately in the bins. For example, don't nestle an aluminium can inside a plastic container.



Empty, rinse and flatten containers. Food or other materials in the containers contaminate the recycling. Remove lids and recycle separately.



Separate glass jars and glass bottles and recycle in the grey Glass Recycling Bin or Glass Recycling Cart. Their metal or plastic lids go in the Blue Box/Containers Cart.



## PAPER PRODUCTS: MIXED PAPER RECYCLING BAG/CART



### ✓ ACCEPTED

#### Boxboard and Cardboard

- ✓ Cardboard boxes (flattened)
- ✓ Cereal boxes
- ✓ Corrugated cardboard (small pieces)
- ✓ Moving and storage boxes
- ✓ Paper egg cartons
- ✓ Paper gift boxes
- ✓ Paper takeout containers (including those with a shiny coating)
- ✓ Pizza boxes (clean)

#### Paper

- ✓ Catalogues, magazines & telephone books
- ✓ Envelopes (with or without window)
- ✓ Flyers & junk mail
- ✓ Miscellaneous paper (notepads, loose leaf paper, white or coloured paper, printed paper, copier/printer paper)
- ✓ Newspapers
- ✓ Paper bags (lunch, groceries)
- ✓ Paper gift bags
- ✓ Paper gift wrap & greeting cards
- ✓ Paper party hats and decorations
- ✓ Shredded paper (inside a paper bag to avoid scattering)

### ✗ NOT ACCEPTED

#### Take to Richmond Recycling Depot

- ✗ Foil/metallic wrapping paper
- ✗ Plastic bags used to cover newspapers/flyers
- ✗ Plastic or foil candy wrappers

#### Repurpose, Sell, Share or Put in Garbage

- ✗ Cardboard boxes with wax coating
- ✗ Greeting cards with non-paper items (glitter, plastic attachments, music devices, batteries)
- ✗ Padded envelopes
- ✗ Ribbons or bows

## TIPS TO RECYCLE CORRECTLY



Remove plastic liners/covers and/or any food residue.



Put shredded paper in a paper bag before placing in the Mixed Paper Recycling Bag/Cart to avoid scattering.



Cut cardboard into small pieces and flatten boxes to take up less space in the Mixed Paper Recycling Bag/Cart and in the collection truck.



Oversized/excessive amounts of cardboard can be dropped off at the Richmond Recycling Depot.



## GLASS JARS & GLASS BOTTLES: GLASS RECYCLING BIN/CART



### ✓ ACCEPTED

✓ Clear or coloured glass bottles and glass jars (pickle jars, jam jars, spaghetti sauce jars, soy sauce bottles)

### ✗ NOT ACCEPTED

Repurpose, Sell, Share or Put in Garbage

- ✗ Broken glass (wrap and put in garbage)
- ✗ Ceramic products
- ✗ Drinking glasses, glass dishes and cookware
- ✗ Lids and caps (remove from the glass bottle/jar and place in Blue Box/Containers Recycling Cart)
- ✗ Mirrors and window glass

## TIPS TO RECYCLE CORRECTLY



Remove plastic and metal lids and recycle separately in the Blue Box/Containers Recycling Cart.



Empty and rinse jars and bottles. Make sure no food is left inside because it contaminates the recycling.



### Set Out Time

Before 7:30 a.m. every week on collection day.

Note: For centralized Blue Cart service, the collection details are arranged between the City and the Strata Council or Property Manager. Residents do not have to set the Blue Carts out for collection.



### Report a Missed Collection

Call 604-276-4010 or email [garbageandrecycling@richmond.ca](mailto:garbageandrecycling@richmond.ca).



### How to Get More Free Recycling Supplies

Supplies include:

- Blue Boxes
- Glass Recycling Bins
- Indoor Collection Bags
- Mixed Paper Recycling Bags

Four ways to order supplies:

1. Pick up at Richmond Recycling Depot
2. Call 604-276-4010
3. Order at [richmond.ca/recyclesearch](http://richmond.ca/recyclesearch)
4. Order in the Richmond Recycling app, free at Apple and Android app stores.



### Richmond Recycling Depot

5555 Lynas Lane  
Open 7 days a week  
(Closed on statutory holidays)  
9:00 a.m. to 6:15 p.m.



# How to Recycle Correctly

## SIMPLE STEPS FOR BETTER RECYCLING



### ✗ COMMON MISTAKES



Glass bottles and glass jars are placed incorrectly in the Blue Box or Containers Recycling Cart



Plastic straws, utensils and stir sticks are placed in the garbage



Containers with food residue are not rinsed before recycling



Recyclable items that are not accepted in residential collection are placed incorrectly in the Blue Box / Blue Cart, such as:

- Batteries and cellphones
- Electronics
- Paints and solvents
- Plastic bags
- Polystyrene (Styrofoam™) packaging
- Propane tanks and butane containers
- Non-packaging plastics like toys

### ✓ HOW TO RECYCLE CORRECTLY

Recycle in grey Glass Recycling Bin or Glass Recycling Cart.

Place them in the Blue Box or Containers Recycling Cart.

Remove food and rinse before placing in Blue Box or Containers Recycling Cart.

Drop off at Richmond Recycling Depot – 5555 Lynas Lane.

# Get the free Richmond Recycling app



## Helpful resources and info at your fingertips

- **SEARCH** how and where to correctly recycle and dispose of items
- **FIND** drop-off locations for recyclables
- **SCHEDULE** collection day reminders
- **ORDER** recycling supplies, play games and more



[richmond.ca/RecycleSearch](https://richmond.ca/RecycleSearch)

Available free at Apple  
and Android app stores.





# 3.3

## Green Cart Program

Food scraps are banned from the garbage, which means they must be recycled or composted, and the City can be charged fines and other penalties when organics are found in the garbage. With the Green Cart program, all Richmond residents have access to food scraps recycling and when recycling with a Green Cart, residents are helping turn food scraps and yard trimmings into compost for nutrient-rich soil.

Richmond also encourages organics recycling by providing Green Cart service at no charge at the City-sponsored community gardens.

It is important to ensure that only food scraps, food soiled paper, and yard and garden trimmings go in the Green Cart. When items like plastic bags, polystyrene (Styrofoam™) or biodegradable/compostable plastic bags are found in the Green Cart, the load is considered contaminated as these materials are not accepted at processing facilities because they compromise the quality of the compost.

Residents can also create their own compost at home to keep these organic materials out of landfills. Residents can purchase a backyard compost bin at the Richmond Recycling Depot.



## GREEN CART FOR FOOD SCRAPS & YARD TRIMMINGS



### ✓ ACCEPTED

#### Food Scraps & Food Soiled Paper

- ✓ Breads, pasta, rice & noodles
- ✓ Coffee grounds & filters
- ✓ Dairy products
- ✓ Fruit
- ✓ Eggshells
- ✓ Meat, poultry, fish, shellfish & bones
- ✓ Paper tea bags
- ✓ Paper towels, napkins & plates
- ✓ Pizza delivery boxes
- ✓ Small amounts of grease/oil absorbed into paper towel
- ✓ Solid grease
- ✓ Table scraps & food scrapings
- ✓ Vegetables

#### Yard Trimmings

- ✓ Flowers
- ✓ Leaves
- ✓ Grass clippings
- ✓ Other organic yard materials
- ✓ Plants (living or dead/dried)
- ✓ Plant trimmings
- ✓ Tree & hedge prunings (branches must be no more than 10 cm (4 in) in diameter and cut short enough to fit in the Green Cart with the lid closed)

### ✗ NOT ACCEPTED

- ✗ Coffee cups
- ✗ Compostable & biodegradable plastic bags
- ✗ Garden hoses or flower pots
- ✗ Liquid grease
- ✗ Lumber
- ✗ Pet feces or kitty litter
- ✗ Plastic bags & plastic overwrap
- ✗ Plastic mesh tea bags
- ✗ Plastic wraps
- ✗ Polystyrene (Styrofoam™) cups, meat trays or takeout containers
- ✗ Prunings over 10 cm (4 in) in diameter
- ✗ Rocks, dirt, sod or soil

#### Why can't I put plastic bags in my green cart?

Plastic bags (including compostable or biodegradable bags) do not break down during the composting process and leave behind flecks of plastic that contaminate the compost.



## TIPS TO RECYCLE CORRECTLY



Collect food scraps in your kitchen container. Wrap food scraps in small amounts of newspaper or used paper towel before adding to kitchen container.



Sprinkle kitchen container with baking soda to reduce odours and consider freezing food scraps until you're ready to empty them into the Green Cart.



Keep kitchen container clean by lining it with a few sheets of newspaper, a paper bag liner or used paper towel.



Empty materials from your kitchen container into your Green Cart.



Place yard trimmings into Green Cart along with your food scraps. Extra yard trimmings can go in large paper bags or additional labelled Green Cans.





## MULTIPLE GREEN CART SIZES AVAILABLE

Richmond provides Green Carts in multiple sizes to meet residents' recycling needs. Residents can exchange their Green Cart for a different size by contacting the Environmental Programs Information Line at 604-276-4010 or email [garbageandrecycling@richmond.ca](mailto:garbageandrecycling@richmond.ca). There is a \$25 fee for cart exchanges.

### SINGLE-FAMILY HOMES CART SIZE SELECTION



#### STANDARD

**Extra Large**  
360 litres  
D 34.5 x W 25 x  
H 44.5 inches

**Large**  
240 litres  
D 27.5 x W 24.5 x  
H 43 inches

**Medium**  
120 litres  
D 21 x W 19 x  
H 37.5 inches

**Small**  
80 litres  
D 21.5 x W 16 x  
H 34.5 inches

### TOWNHOMES CART SIZE SELECTION



#### STANDARD

**Small**  
80 litres  
D 21.5 x W 16 x  
H 34.5 inches

**Compact**  
46.5 litres  
D 12 x W 11 x  
H 27 inches



## BACKYARD COMPOSTING PROGRAMS

**Backyard Compost Bins:** Backyard compost bins are available for sale at the Richmond Recycling Depot for \$25 plus tax.

**Demonstration Garden:** To help residents learn about composting, the City hosts a Compost Demonstration area in the Terra Nova Rural Park at 2631 Westminster Highway just west of No. 1 Road. It is open from dawn to dusk year-round.

**Compost Hotline:** For tips, call 604-736-2250 or email [composthotline@telus.net](mailto:composthotline@telus.net).

## YARD TRIMMINGS DROP-OFF

Richmond residents and commercial landscapers can drop off yard trimmings at the following locations.

### Ecowaste Industries

15500 Blundell Road

(access from Blundell via No. 8 Road and Westminster Hwy., or via Nelson Road and Highway 91)

Commercial operators can be pre-approved for dropping off materials at no charge when they are servicing residential properties with Richmond Green Cart service. Visit [ecowaste.com](http://ecowaste.com) or call 604-277-1410 for information.

### City Recycling Depot

5555 Lynas Lane

Open 7 days a week

(Closed on statutory holidays)

9:00 a.m. to 6:15 p.m.

There is no charge for dropping off amounts less than one cubic yard (a car, station wagon or minivan load). Large loads are charged a fee of \$25 per cubic yard. Commercial operators will be charged a fee of \$25 per cubic yard at the Richmond Recycling Depot.



### Set Out Time

Before 7:30 a.m. every week on collection day.

Note: For centralized Green Cart service, the collection details are arranged between the City and the Strata Council or Property Manager. Residents do not have to set the carts out for pick-up.



### Report a Missed Collection or Damaged Green Cart

Call 604-276-4010 or email [garbageandrecycling@richmond.ca](mailto:garbageandrecycling@richmond.ca).



### How to Exchange your Green Cart

Various cart sizes are on display at the Richmond Recycling Depot. Please note there is a \$25 charge to exchange your cart. To change to an alternative size, please call 604-276-4010.



### New/Replacement Kitchen Containers

Four ways to order supplies:

1. Pick up at Richmond Recycling Depot.
2. Call 604-276-4010.
3. Order at [richmond.ca/recyclesearch](http://richmond.ca/recyclesearch).
4. Order in the Richmond Recycling app, free at Apple and Android app stores.





# 3.4

## Garbage Cart Program

Richmond's curbside Garbage Cart program provides residents with convenient options for waste disposal. Household garbage is collected biweekly. The Garbage Cart program includes City-provided carts with wheels and lids, and is designed to lower costs for residents who are reducing the amount of garbage they produce by recycling their household waste.

Most household items are recyclable. Residents are encouraged to think twice before putting items in the garbage to help keep recyclables out of the landfill.

It's important to secure or wrap loose garbage to prevent materials from being scattered by wind or animals. Garbage must be securely packed in plastic bags. This includes ashes, kitty litter, disposable diapers, vacuum cleaner sweepings, disposable masks and gloves, and other loose household garbage.

All garbage must be placed at curbside before 7:30 a.m. on collection day but no earlier than 8:00 p.m. the day before. Do not place receptacles or other items on the road.

Residents are responsible for cleaning up any loose materials that have been scattered over the ground by animals, wind or vandalism.





## EXTRA ITEM DISPOSAL OPTIONS

### Garbage Disposal Vouchers

Richmond residents may purchase a Garbage Disposal Voucher for \$5 at all City facilities. These vouchers are good for up to \$25 at the Vancouver Landfill, and are valid anytime. They are limited to one per household per year.

### \$2 Garbage Tags

Garbage Tags for curbside collection are available for purchase at all City facilities. One Garbage Tag is good for an additional garbage bag or can.

Visit [richmond.ca/garbage](http://richmond.ca/garbage) for a list of City facilities selling Garbage Tags and Garbage Disposal Vouchers.

## GARBAGE CART SIZE OPTIONS

Residents who select smaller cart sizes are generating less garbage and, as a result, pay less for their annual garbage collection.

Residents can exchange their cart for a different size, and their garbage collection fees will be adjusted according to the size selected. Residents can exchange their Garbage Cart for a different size for \$25 by calling 604-276-4010.



**Extra Large**  
360 litres  
D 34.5 x W 25 x H 44.5 in



**Large**  
240 litres  
D 27.5 x W 24.5 x H 43 in  
**Standard size for  
single-family homes**



**Medium**  
120 litres  
D 21.5 x W 19 x H 37.5 in  
**Standard size  
for townhomes**



**Small**  
80 litres  
D 20 x W 16 x H 34.5 in





# 3.5

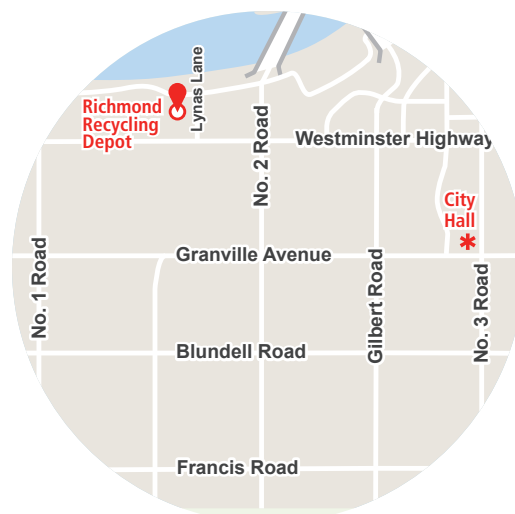
## Richmond Recycling Depot

The Richmond Recycling Depot is located at 5555 Lynas Lane and is open from 9:00 a.m. to 6:15 p.m., seven days a week for drop-off of a broad range of materials.

The Recycling Depot is owned and operated by the City of Richmond, with both full-time staff and additional staff support as needed to manage increased recycling volumes. Staff on site are available to answer questions and provide assistance with unloading awkward or heavy items.

The City continues to increase the number of items accepted at the Recycling Depot to make it a convenient, one-stop drop-off location for multiple items. Richmond residents can bring a wide range of recyclable materials at no charge.

**Richmond Recycling Depot**  
5555 Lynas Lane  
Open 7 days a week  
9:00 a.m. to 6:15 p.m.  
(except statutory holidays)





## RECYCLING DEPOT SERVICES

Residents are encouraged to use their weekly collection bins to recycle household items like glass bottles and glass jars, mixed containers and mixed paper. Businesses are encouraged to set up contracts for on-site collection services if they produce a large quantity of recyclable materials. However, residents and small business operators can also drop off recyclable materials at the Recycling Depot.

This facility accepts a wide range of materials, including cardboard, yard and garden trimmings, mixed paper and newspapers as well as polystyrene (Styrofoam™), used books, cellphones, household batteries, plastic bags and metal items (e.g., bike frames, barbecues and lawn mowers).

The facility is also a product stewardship (take-back) collection site for large and small appliances, paints, solvents, flammable liquids, pesticides, lights and lighting fixtures, tires, electronics, motor oil, batteries, thermostats, fire extinguishers, and smoke and carbon monoxide alarms.

The City receives revenues from the sale of materials collected from the Recycling Depot or from product stewards for materials the City collects on their behalf. All revenues from commodities and other materials are applied to the operating cost of the program to return the value directly to Richmond taxpayers.



### For Sale at the Recycling Depot

- Compost bins - \$25 each + tax
- Rain barrels - \$30 each + tax
- Extra Garbage Tags - \$2 each
- Garbage Disposal Vouchers - \$5 for Richmond residents and value is up to \$25 at the Vancouver Landfill



### Free Recycling Supplies Available at the Recycling Depot

- Food Scraps Kitchen Containers
- Grey Glass Recycling Bins
- Blue Boxes
- Yellow Mixed Paper Recycling Bags
- Indoor Collection Bags
- Green Can Decals

# Welcome to the Richmond Recycling Depot!

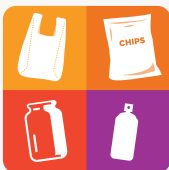
You'll be amazed by how much you can take – for free – to the Richmond Recycling Depot.

Use the map below to see where to take your items once you arrive at the Recycling Depot. The icons are colour-coded to match the signs at the Depot and help you quickly find your way.

There are always attendants available to help you and to safely handle hazardous recyclable items.




For a virtual tour, visit  
**[richmond.ca/depot](https://richmond.ca/depot)**



**Welcome!**



## MATERIALS ACCEPTED

- ✓ Aerosol & spiral wound cans
- ✓ Aluminium materials
- ✓ Appliances
- ✓ Baby car seats/booster seats\*
- ✓ Batteries (lead acid car batteries)
- ✓ Batteries (small household batteries less than 5 kg)
- ✓ Books
- ✓ Butane cylinders
- ✓ Cellphones (including batteries)
-  Clothing and other textiles
- ✓ Cooking oil & animal fat
- ✓ Corrugated cardboard (flattened, clean corrugated boxes)
- ✓ Electronics
- ✓ Exercise & hobby machines
- ✓ Fire extinguishers
- ✓ Flammable aerosols
- ✓ Flammable liquids
- ✓ Flexible plastic packaging, plastic bags & plastic overwrap
- ✓ Flower pots (paper & plastic pots/trays)
- ✓ Gasoline (in approved ULC containers)
- ✓ Glass bottles/jars (clear & coloured)
- ✓ Lights
- ✓ Lighting fixtures
- ✓ Magazines
- ✓ Metal items
- ✓ Mixed paper
- ✓ Motor oil & antifreeze
- ✓ Newspaper
- ✓ Paints (household paints)
- ✓ Paint aerosols
- ✓ Pesticides (domestic pesticides)
- ✓ Plastic containers
- ✓ Plastic recycling bags
- ✓ Polystyrene (Styrofoam™) packaging
- ✓ Power tools
- ✓ Propane tanks
- ✓ Sewing, knitting & textile machines
- ✓ Smoke & carbon monoxide alarms
- ✓ Thermostats
- ✓ Tin & aluminium cans
- ✓ Tires (passenger & light-duty trucks only)
- ✓ Upholstered furniture\*
- ✓ Yard & garden trimmings

All materials must be sorted into different containers at the Recycling Depot. See [richmond.ca/depot](https://richmond.ca/depot) for details.

\* Proof of residency required.





# 3.6

## Large Item Pick Up Program

Richmond's Large Item Pick Up program provides a convenient curbside collection service for up to six large household items per year, including mattresses, furniture and appliances. This program is designed to make it more convenient for residents to dispose of large household items and to help reduce illegal dumping. As well, through this program, large household items that can be recycled will be diverted from the landfill.

The Large Item Pick Up program is provided to residents in single-family homes as well as townhomes and multi-family complexes with the City's Garbage Cart and/or Blue Box program.

This service makes it easier for residents who do not have access to a vehicle to dispose of large items.

## HOW THE PROGRAM WORKS

- 1** To schedule collection of up to six items per year, residents can contact the City's service provider, Sierra Waste Services, at 604-270-4722 or schedule online at [richmond.ca/largeitem](https://richmond.ca/largeitem).
- 2** Sierra Waste Services will contact you to provide a pick-up date and confirmation number.
- 3** On your scheduled pick-up date only, place items at the curb, or for multi-family complexes, in the area designated by the strata or property manager, before 7:30 a.m. or no earlier than 8:00 p.m. the night before.

### LARGE ITEM PICK UP PROGRAM



#### ✓ ACCEPTED

- ✓ Appliances (stove, dishwasher, washer and/or dryer, hot water tank, refrigerator, freezer, microwave)
- ✓ Barbecues (remove lava rock briquettes and/or propane tank)
- ✓ Bed frames
- ✓ Electric lawnmowers
- ✓ Exercise equipment (treadmill, elliptical, stationary bike, stair climber, weight set)
- ✓ Furniture (e.g., couch, coffee table, chair, desk, dresser, TV stand, cabinet, table, hutch, crib, high chair, entertainment centre)
- ✓ Headboards
- ✓ Mattresses or boxsprings
- ✓ Outdoor furniture (chair, patio table, patio umbrella)
- ✓ Small household goods, provided they are boxed or bundled and are a reasonable size (one box or bundle is equal to one of the resident's six allotted items)
- ✓ Tires (car and light-duty truck)

#### ! PREPARATION REQUIREMENTS

- ! Wrap mattresses in plastic and seal with tape to prevent them from getting wet. Cover boxsprings and upholstered furniture with tarps or plastic to keep them dry. Tarps will be left behind for reuse.
- ! Confirm mattresses, boxsprings and upholstered furniture are free of bedbugs to ensure they are accepted for recycling at the facility.
- ! Remove latch/door from freezers, refrigerators or any other container equipped with a door, latch or locking device.

#### ✗ NOT ACCEPTED

- ✗ Car bodies or parts
- ✗ Carpets
- ✗ Construction and demolition waste (drywall)
- ✗ Gas lawnmowers\*
- ✗ Hazardous waste
- ✗ Home renovation items (sinks, flooring, doors, windows)
- ✗ Lumber
- ✗ Mattresses/boxsprings and upholstered furniture that are wet or infested with bed bugs or vermin
- ✗ Propane tanks\*
- ✗ Tree stumps

\*Take to Richmond Recycling Depot

Not sure where to recycle an item? Use the Recycling Wizard tool on the free Richmond Recycling app to find out where to recycle your item.



# 3.7

## Public Spaces Programs

Maintaining a litter-free community and encouraging recycling in parks and other public spaces is an essential part of responsible and sustainable waste management. Not only does this help keep the City a beautiful place to live and visit, it also helps to reduce the amount of plastic and other garbage going into oceans and other waterways.

The City has three primary services to support recycling and a litter-free community: Public Spaces services, Litter Collection services and Special Event Recycling.

Because building community pride and increasing responsible behaviours involve working together with the community, the City also works with volunteers through the Partners for Beautification program and community clean-up events.



## PUBLIC SPACES SERVICES

The City of Richmond has recycling and garbage bins located throughout the community in public spaces that include parks and business districts. Recycling and garbage bins are serviced or inspected almost 7,900 times each week.

The City's bins include instructional bin labels to help inform people about how to sort items correctly. Many of the recycling bins feature images that complement the surrounding scenery, and others feature custom artwork by local artists. To further improve capacity and operational efficiency, the City also has large, in-ground garbage collection bins in high-traffic areas.



## LITTER COLLECTION SERVICES

Maintaining a litter-free city is a key focus area to ensure residents can enjoy clean parks and public spaces. The City of Richmond has made efforts to ensure that there are garbage bins, and in many cases recycling options, in public spaces throughout the city.

In addition, City crews work seven days a week to collect litter from parks, school grounds, roadsides, sidewalks and boulevards.

They inspect or service garbage and recycling from litter and recycling receptacles in the community 34,200 times every month. Crews also assist with removing graffiti from City garbage bins, and they collect illegally dumped materials found on City property and provide safe disposal and recycling of these items.

The extensive work to maintain public spaces and collect litter may go unnoticed but City staff work hard seven days a week to maintain a clean and livable community for Richmond residents.

## SPECIAL EVENT RECYCLING

Recycling stations are recommended for special event bookings taking place in Richmond. For some major events, the City hosts recycling stations with assistance from Green Ambassador volunteers. This involves setting up recycling stations and having recycling volunteers at the event to advise people on how to recycle.

The City also supports events by providing organizers with recycling bins and garbage carts at no charge, as well as complimentary collection services. This makes it easy for event organizers to keep the venue clean and recyclables out of the landfill.

In addition, the City participates in community clean-up events each year.







# 3.8

## Outreach and Customer Service

Richmond's successful outreach and customer service programs are designed to help turn information and education into action.

By working with children and youth through school programs and the Green Ambassadors, Richmond creates a learning environment where students gain a better understanding about recycling and sustainable waste management, and then apply their skills as volunteers and through school activities. The City is also offering more virtual outreach opportunities.

Providing outreach, customer support services and information materials also assists residents by increasing their understanding of how to recycle correctly along with new tools and services to promote recycling at home and on the go.

The Environmental Programs Information Line staff assist customers on the phone, via email and at community events to answer questions, assist with requests relating to garbage and recycling, and provide guidance on where to find additional information and resources. Richmond staff also assist customers directly at the Recycling Depot, and through its outreach programs in the community.

At the Recycling Depot, staff provide assistance about where and how to recycle using its drop-off options, answer questions about City programs and services, and sell products such as compost bins and rain barrels as well as Garbage Tags and Garbage Disposal Vouchers. Through outreach, Richmond goes into the community to connect with residents to share information and respond to questions.



**Richmond held 11 free Repair Fairs in 2024 that encouraged residents to repair usable items rather than sending them to the landfill.**

## COMMUNITY WORKSHOPS

Richmond's free community workshops provide education and tips that support recycling and waste reduction techniques. A summary of workshops is provided below.

For information on the workshops, call the Environmental Programs Information Line at 604-276-4010, email [garbageandrecycling@richmond.ca](mailto:garbageandrecycling@richmond.ca), or visit the Community Outreach section at [richmond.ca/recycle](https://richmond.ca/recycle).

## RICHMOND GREEN AMBASSADORS

Richmond's Green Ambassadors are dedicated high school students who participate in monthly symposiums to learn about environmental sustainability and apply what they have learned as volunteers at City events and activities. These energetic and environmentally conscious individuals also manage green initiatives in their schools.

## STUDENT OUTREACH

Richmond sponsors programs, contests and other activities for local students to raise awareness about the importance of reducing waste and how to recycle correctly. These activities inspire them to feel that taking care of the planet is fun.

To encourage youth involvement beyond the Green Ambassador program, the City will explore collaborating with agencies to create work opportunities that support young people in advancing in green career paths, supporting sustainable City initiatives.

## SEARCH & TIPS TOOLS

Richmond offers the Recycling Wizard to help residents find where they can recycle household items. The Recycling Wizard is available online at [richmond.ca/recyclesearch](https://richmond.ca/recyclesearch) and in the Richmond Recycling app, free from the Apple and Android app stores.

| TYPE OF WORKSHOP                      | DESCRIPTION   |
|---------------------------------------|---|
| <b>Recycling Workshops</b>            | Learn how to reduce reliance on single-use items and sort household recyclables properly to reduce contamination. Understand the recycling process and the importance recycling has for the environment, including the impact of marine plastic and other hot topics in solid waste management. |
| <b>Richmond Recycling Depot Tours</b> | Interactive tour of the Richmond Recycling Depot designed to teach residents about the drop-off options available and materials accepted for recycling.   |



# **TIPS TO RECYCLE AND REDUCE WASTE**

# 4.0

## Tips and Resources

In Richmond, we care about our community, and we are working together with residents and local organizations to reduce waste and promote a circular economy. These Tips and Resources highlight the City's community partners, and provide a guide for how to deal with hazardous waste and other items not accepted in curbside and centralized recycling programs.

With the help of community resources and partnerships, Richmond residents have access to easy and convenient drop-off services and programs to support recycling, safe disposal and waste reduction. This section includes contact information and locations for Richmond services and community partners involved in take-back collection through product stewardship programs. Together, these Tips and Resources help to support maximum recycling and reduce the amount of waste going to the landfill.





# 4.1

## Community Resources and Partnerships

## ECOWASTE INDUSTRIES

The City offers residents the option to drop off unlimited quantities of yard and garden trimmings for free at Ecowaste Industries. Proof of Richmond residency is required.

### Ecowaste Industries:

15500 Blundell Road  
604-277-1410  
ecowaste.com

## RECYCLING COUNCIL OF BRITISH COLUMBIA (RCBC)

RCBC provides information and resources to support recycling in the community.

### Recycling Hotline

Monday to Friday, 9 a.m. to 4 p.m.  
604-RECYCLE (604-732-9253)  
hotline@rcbc.bc.ca  
rcbc.ca

## COMPOST HOTLINE

The Compost Hotline is a community program operated by City Farmer that provides support and tips for best practices in home composting.

### Compost Hotline:

604-736-2250  
composthotline@telus.net

## METRO VANCOUVER RECYCLES

Metro Vancouver Recycles helps you find options for recycling products and get helpful links to online services.

### Metro Vancouver Recycling Directory:

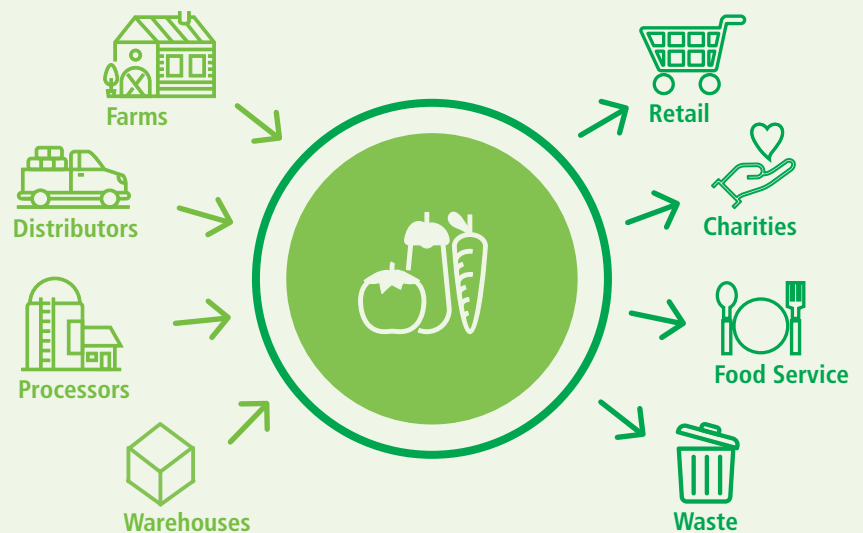
metrovancoverrecycles.org or recycling.metrovancouver.org

## CITY OF RICHMOND FOOD RECOVERY NETWORK

Partnering with FoodMesh, this program safely and easily diverts surplus food by bringing together local food businesses with charities and farmers.

### Richmond Food Recovery Network:

foodmesh.ca/services-regional/richmond







# 4.2

## Banned and Hazardous Materials

Careless handling of hazardous products can cause serious injury as well as damage to the environment. Hazardous products that are dumped in sewers or green spaces can injure livestock, wildlife and plant life. Careful and often specialized disposal is essential for these materials.

There are certain materials that Metro Vancouver disposal facilities do not accept, either because there are already recycling programs set up for these items or because they are hazardous to waste collection workers, the public and the environment.

At disposal sites, garbage loads are inspected for banned and prohibited materials. Loads that arrive at the disposal sites containing prohibited materials are assessed a \$76 minimum surcharge, plus the cost of removal, clean-up or remediation. Loads containing banned materials are assessed a 50% tipping fee surcharge.

For a list of drop-off locations, use the City's Recycling Wizard available on the Richmond Recycling app and at [richmond.ca/recyclesearch](http://richmond.ca/recyclesearch), or call the RCBC Recycling Hotline at 604-732-9253.



## BANNED HAZARDOUS AND OPERATIONAL IMPACT MATERIALS



- x Agricultural waste
- x Asbestos
- x Automobile bodies and parts
- x Barrels, drums, pails or large (205 litres or greater) liquid containers, full or empty
- x Biomedical waste
- x Dead animals
- x Gypsum
- x Hazardous waste
- x Inert fill material, including soil, sod, gravel, concrete and asphalt exceeding 0.5 cubic metres per load
- x Liquids or sludge
- x Refuse that is on fire, smouldering, flammable or explosive
- x Wire and cable exceeding 1% of load



## BANNED MATERIALS THAT ARE RECYCLABLE WITH CITY SERVICES

- x Beverage containers
- x Containers made of glass, metal or banned recycled plastic 1 2 4 5
- x Corrugated cardboard
- x Electronics
- x Expanded polystyrene packaging
- x Food waste
- x Green waste
- x Mattresses
- x Motor oil & antifreeze
- x Propane tanks
- x Recyclable paper
- x Tires (passenger & light-duty truck only)

For a complete list of banned materials, please visit [metrovancover.org/services/solid-waste/recycling-programs/disposal-ban](https://metrovancover.org/services/solid-waste/recycling-programs/disposal-ban)



# 4.3

## Recycling and Disposal Directory

Many common hazardous household and automotive products must be recycled or disposed through special depots. Disposal sites and take-back collection options for hazardous, banned and other materials are listed on the following pages.

Please note that this information is provided as a reference for your convenience; however, it is not guaranteed. Please call first to confirm that the site is still open to accept these take-back products and to check hours of operation.



### ANTIFREEZE AND EMPTY CONTAINERS

| DROP-OFF LOCATION  | PHONE        |
|--|--------------|
| Richmond Recycling Depot<br>5555 Lynas Lane  | 604-276-4010 |
| Jiffy Lube<br>10991 No. 4 Road   | 604-448-0142 |
| List of accepted items: 604-732-9253 or <a href="http://interchangerecycling.com/find-a-recycling-centre">interchangerecycling.com/find-a-recycling-centre</a> . |              |



### APPLIANCES – SMALL

| DROP-OFF LOCATION   | PHONE          |
|---|----------------|
| Richmond Recycling Depot<br>5555 Lynas Lane   | 604-276-4010   |
| Ironwood Bottle & Return-It Depot<br>110-11020 Horseshoe Way                                      | 604-275-0585   |
| OK Bottle Depot<br>145-5751 Cedarbridge Way   | 604-244-0008   |
| Regional Recycling<br>13300 Vulcan Way  | 1-855-701-7171 |
| List of accepted items: <a href="http://electrorecycle.ca">electrorecycle.ca</a> or 604-732-9253. |                |



### BABY CAR SEATS

| DROP-OFF LOCATION  | PHONE        |
|--|--------------|
| Richmond Recycling Depot<br>5555 Lynas Lane  | 604-276-4010 |
| \$ City of Vancouver Landfill<br>5400 72nd Street, Delta                                 | 604-873-7000 |
| \$ Pacific Mobile Depots (third Saturday of every month)                                 |              |
| Britannia Community Centre<br>1661 Napier Street, Vancouver                              | 250-893-8383 |
| Lord Byng Secondary School<br>3939 W 16th Avenue, Vancouver                              | 250-893-3851 |
| \$ Queensborough Landing<br>Return-it Depot<br>Unit A-409 Boyne Road,<br>New Westminster | 604-540-4467 |

Watch for the **blue** listings for items recyclable through the City of Richmond. See Programs and Services starting on page 28 to find out what is accepted through the City's collection and drop-off services.

**Disposal Ban** – Banned from the landfill and recyclable through retailers, stewardship or take-back programs

**Disposal Ban** – Banned from the landfill and recyclable through the City and other services

**Not Banned** – Recyclable through the City and other services

**Not Banned** – Recycling options are available

**\$ A fee is charged**



### BATTERIES – AUTOMOTIVE

| DROP-OFF LOCATION                           | PHONE          |
|---|----------------|
| Richmond Recycling Depot<br>5555 Lynas Lane | 604-276-4010   |
| Canadian Tire<br>11388 Steveston Highway    | 604-271-6651   |
| Kal Tire<br>2633 No. 5 Road                 | 604-278-9181   |
| Regional Recycling<br>13300 Vulcan Way      | 1-855-701-7171 |

Note: All retailers accept a used battery for each one purchased. Collection sites: [recyclemybattery.ca](http://recyclemybattery.ca)



### BATTERIES – HOUSEHOLD AND MOBILE PHONES

Batteries weighing 5 kg or less

| DROP-OFF LOCATION   | PHONE                        |
|---|------------------------------|
| Richmond Recycling Depot<br>5555 Lynas Lane                     | 604-276-4010                 |
| Best Buy Lansdowne Centre<br>700-5300 No. 3 Road                | 604-273-7335                 |
| Best Buy Richmond Centre<br>113-6551 No. 3 Road                 | 604-273-1475                 |
| Costco<br>9151 Bridgeport Road                                  | 604-270-3647                 |
| Home Depot<br>2700 Sweden Way                                   | 604-303-9882                 |
| Kwantlen Student Association<br>8771 Lansdowne Road             | 604-599-2865                 |
| London Drugs<br>5971 No. 3 Road<br>3080-11666 Steveston Highway | 604-448-4811<br>604-448-4852 |
| Pharmasave<br>105-12420 No. 1 Road<br>116-10151 No. 3 Road      | 604-232-0159<br>604-241-2898 |
| Regional Recycling<br>13300 Vulcan Way                          | 1-855-701-7171               |
| Rona (batteries only)<br>7111 Elmbridge Way                     | 604-273-4606                 |
| Staples<br>8171 Ackroyd Road<br>110-2780 Sweden Way             | 604-270-9599<br>604-303-7850 |

Batteries accepted: [call2recycle.ca](http://call2recycle.ca) or 1-888-224-9764.

Mobile phone drop-off sites: [call2recycle.ca/locator](http://call2recycle.ca/locator).

All cellular/mobile phone stores accept used cellular/mobile phones for refurbishing or recycling.



### BUTANE CYLINDERS

| DROP-OFF LOCATION                           | PHONE        |
|---|--------------|
| Richmond Recycling Depot<br>5555 Lynas Lane | 604-276-4010 |



### CARBON MONOXIDE (CO), SMOKE AND COMBINATION SMOKE & CO ALARMS

| DROP-OFF LOCATION   | PHONE                        |
|---|------------------------------|
| Richmond Recycling Depot<br>5555 Lynas Lane                     | 604-276-4010                 |
| London Drugs<br>5971 No. 3 Road<br>3200-11666 Steveston Highway | 604-448-4811<br>604-448-4852 |
| Regional Recycling<br>13300 Vulcan Way                          | 1-855-701-7171               |

Complete list of alarms accepted: [productcare.org](http://productcare.org) or 1-877-592-2972 ext. 401.



### ELECTRONICS: Audio-visual equipment, computers, monitors, televisions, printers, fax machines, scanners, video games and accessories

| DROP-OFF LOCATION  | PHONE          |
|--|----------------|
| Richmond Recycling Depot<br>5555 Lynas Lane              | 604-276-4010   |
| Best Buy Lansdowne Centre<br>700-5300 No. 3 Road         | 1-866-237-8289 |
| Blundell Return-It Centre<br>130-8180 No. 2 Road         | 604-274-1999   |
| Ironwood Bottle & Return-It Depot<br>11020 Horseshoe Way | 604-275-0585   |
| OK Bottle Depot<br>145-5751 Cedarbridge Way              | 604-244-0008   |
| Regional Recycling<br>13300 Vulcan Way                   | 1-855-701-7171 |

Complete list of materials accepted: [return-it.ca/electronics](http://return-it.ca/electronics) or 604-473-2400.



### EXERCISE AND HOBBY MACHINES

| DROP-OFF LOCATION                           | PHONE          |
|---|----------------|
| Richmond Recycling Depot<br>5555 Lynas Lane | 604-276-4010   |
| Regional Recycling<br>13300 Vulcan Way      | 1-855-701-7171 |

Complete list of materials accepted: [return-it.ca/electronics](http://return-it.ca/electronics) or 604-473-2400.

**EYEGLASSES****DROP-OFF LOCATION**

Drop off at any local optometrist or eye care professional.

**FIRE EXTINGUISHERS****DROP-OFF LOCATION****PHONE**

Richmond Recycling Depot  
5555 Lynas Lane

604-276-4010

 Fire Radius  
22131 Fraserwood Way

604-232-3473

**FLAMMABLE LIQUIDS, PESTICIDES, SOLVENTS AND GASOLINE****DROP-OFF LOCATION****PHONE**

Richmond Recycling Depot  
5555 Lynas Lane

604-276-4010

Regional Recycling  
13300 Vulcan Way

1-855-701-7171

Complete list of accepted items: [productcare.org](http://productcare.org) or 1-877-592-2972 ext. 406.

**GENERAL HAZARDOUS MATERIALS****DROP-OFF LOCATION****PHONE**

 Secure Energy  
160-13511 Vulcan Way

604-214-7000


**GYPSUM DRYWALL**

No other materials attached to or on drywall

**DROP-OFF LOCATION****PHONE**

 City of Vancouver Landfill  
5400 72nd Street, Delta

604-873-7000

 New West Gypsum Recycling  
38 Vulcan Street  
New Westminster

604-534-9925

Vancouver Transfer Station  
(maximum 1/2 sheet with  
a paid load of garbage)  
377 W. Kent Avenue N., Vancouver

604-873-7000

**HYPODERMIC NEEDLES****DROP-OFF LOCATION**

Purchase a "Sharps Container" from a pharmacy and return the container to same pharmacy when full.  
Complete list of drop-off locations:  
[healthsteward.ca/returning-medical-sharps](http://healthsteward.ca/returning-medical-sharps).

**LIGHTS AND LIGHTING FIXTURES****DROP-OFF LOCATION****PHONE**

Richmond Recycling Depot  
5555 Lynas Lane

604-276-4010

OK Bottle Depot  
145-5751 Cedarbridge Way

604-244-0008

Regional Recycling  
13300 Vulcan Way

1-855-701-7171

Rona  
7111 Elmbridge Way

604-273-4606

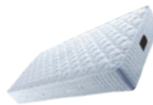
Complete list of accepted items: [productcare.org](http://productcare.org) or 1-877-592-2972 ext. 407.

**LUBRICATING OIL (USED), OIL FILTERS AND PLASTIC OIL CONTAINERS****DROP-OFF LOCATION****PHONE**

Richmond Recycling Depot  
5555 Lynas Lane


604-276-4010

Accepted items: 604-732-9253 or  
[interchangerecycling.com/find-a-recycling-centre](http://interchangerecycling.com/find-a-recycling-centre).

**MATTRESSES AND BOXSPRINGS****DROP-OFF LOCATION****PHONE**

 City of Vancouver Landfill  
5400 72nd Street, Delta

604-873-7000

 Vancouver Transfer Station  
377 W. Kent Avenue N.,  
Vancouver

604-873-7000

Richmond's Large Item Pick Up Program: Contact  
Sierra Waste at 604-270-4722. Some restrictions  
apply. Program details: [richmond.ca/largeitem](http://richmond.ca/largeitem).



### MEDICAL DEVICES AND EQUIPMENT

| DROP-OFF LOCATION                           | PHONE          |
|---|----------------|
| Richmond Recycling Depot<br>5555 Lynas Lane | 604-276-4010   |
| OK Bottle Depot<br>145-5751 Cedarbridge Way | 604-244-0008   |
| Regional Recycling<br>13300 Vulcan Way      | 1-855-701-7171 |



### MUSICAL INSTRUMENTS (ELECTRONIC)

| DROP-OFF LOCATION                           | PHONE          |
|---|----------------|
| Richmond Recycling Depot<br>5555 Lynas Lane | 604-276-4010   |
| OK Bottle Depot<br>145-5751 Cedarbridge Way | 604-244-0008   |
| Regional Recycling<br>13300 Vulcan Way      | 1-855-701-7171 |



### PAINT AND PAINT AEROSOL CONTAINERS

| DROP-OFF LOCATION  | PHONE          |
|--|----------------|
| Richmond Recycling Depot<br>5555 Lynas Lane                  | 604-276-4010   |
| Ironwood Bottle & Return-It Depot<br>110-11020 Horseshoe Way | 604-275-0585   |
| Regional Recycling<br>13300 Vulcan Way                       | 1-855-701-7171 |

Complete list of accepted items: [productcare.org](http://productcare.org) or 1-877-592-2972 ext. 405.



### PHARMACEUTICAL DROP-OFF LOCATION

All pharmacies accept leftover or outdated prescription drugs, non-prescription medications, herbal products, mineral supplements, vitamin supplements and throat lozenges for safe disposal.

For a list of pharmacies and/or drugs, medications, herbal products and mineral supplements accepted, visit [healthsteward.ca/returning-medications](http://healthsteward.ca/returning-medications) or call 604-732-9253.

*Note: Please do not wash these items down the drain or throw them in the garbage.*



### POLYSTYRENE (STYROFOAM™) - MOLDED PACKAGING & FOOD CONTAINERS

| DROP-OFF LOCATION   | PHONE                        |
|---|------------------------------|
| Richmond Recycling Depot<br>5555 Lynas Lane   | 604-276-4010                 |
| Ironwood Bottle & Return-It Depot<br>110-11020 Horseshoe Way  | 604-275-0585                 |
| London Drugs (only accepts materials purchased in-store)<br>5971 No. 3 Road<br>3200-11666 Steveston Highway | 604-448-4811<br>604-448-4852 |
| Queensborough Landing<br>Return-It Depot<br>Unit A-409 Boyne Road,<br>New Westminster                       | 604-540-4467                 |



### POLYSTYRENE (STYROFOAM™) - PEANUTS/CHIPS

| DROP-OFF LOCATION  | PHONE                        |
|--|------------------------------|
| Packaging Depot<br>6360 Kingsway, Burnaby<br>5524 Cambie Street, Vancouver | 604-451-1206<br>604-325-9966 |



### PROPANE TANKS: Refillable & Disposable

| DROP-OFF LOCATION                                     | PHONE        |
|---|--------------|
| Richmond Recycling Depot<br>5555 Lynas Lane           | 604-276-4010 |
| City of Vancouver Landfill<br>5400 72nd Street, Delta | 604-873-7000 |

*Note: Free drop-off of up to four disposable tanks and two refillable tanks.*



### OUTDOOR POWER EQUIPMENT

| DROP-OFF LOCATION                           | PHONE          |
|---|----------------|
| Richmond Recycling Depot<br>5555 Lynas Lane | 604-276-4010   |
| Regional Recycling<br>13300 Vulcan Way      | 1-855-701-7171 |



### SEWING, KNITTING & TEXTILE MACHINES

| DROP-OFF LOCATION  | PHONE          |
|--|----------------|
| Richmond Recycling Depot<br>5555 Lynas Lane                  | 604-276-4010   |
| Ironwood Bottle & Return-It Depot<br>110-11020 Horseshoe Way | 604-275-0585   |
| OK Bottle Depot<br>145-5751 Cedarbridge Way                  | 604-244-0008   |
| Regional Recycling<br>13300 Vulcan Way                       | 1-855-701-7171 |





### TELUS EQUIPMENT (RENTAL OR RETAIL) DROP-OFF LOCATION

All TELUS rental or retail equipment such as cordless/corded phones, Voice Over IP (VOIP) phones, Global Positioning System (GPS) equipment and video/telephone conference equipment can be returned via Canada Post. Call 1-888-811-2323 for more information.



### THERMOSTATS

| DROP-OFF LOCATION  | PHONE        |
|--|--------------|
| Richmond Recycling Depot<br>5555 Lynas Lane                                | 604-276-4010 |
| Andrew Sheret Ltd.<br>4500 Vanguard Road                                   | 604-278-3766 |
| Vancouver Zero Waste Centre<br>(maximum 2)<br>8588 Yukon Street, Vancouver | 604-873-7000 |

Drop-off locations: [hrai.ca/public-drop-off-locations](http://hrai.ca/public-drop-off-locations) or 1-800-267-2231 ext 224.



### TIRES – VEHICLES (OFF-RIM UNLESS NOTED)

| DROP-OFF LOCATION   | PHONE                        |
|---|------------------------------|
| Richmond Recycling Depot<br>5555 Lynas Lane   | 604-276-4010                 |
| Canadian Tire<br>3500 No. 3 Road<br>11388 Steveston Highway   | 604-273-2939<br>604-271-6651 |
| Kal Tire (limit of 4)<br>2633 No. 5 Road  | 604-278-9181                 |
| Metro Tires<br>13320 Mitchell Road  | 604-783-4435                 |
| OK Tire (limit of 4 per household)<br>5831 Minoru Boulevard   | 604-278-5171                 |
| Vancouver Landfill (Passenger/light truck, with/without rims, limit of 10)<br>5400 72nd Street, Delta | 604-873-7000                 |

Richmond's Large Item Pick Up Program: Contact Sierra Waste at 604-270-4722. Some restrictions apply. Program details: [richmond.ca/largeitem](http://richmond.ca/largeitem).

Complete list of locations: [tsbc.ca/recycle-your-tires/](http://tsbc.ca/recycle-your-tires/) or 1-866-759-0488.

All retail locations accept a used tire for a new one purchased.



### TIRES AND TUBES – BICYCLES

| DROP-OFF LOCATION                                    | PHONE        |
|--|--------------|
| Richmond Recycling Depot<br>5555 Lynas Lane          | 604-276-4010 |
| Village Bikes (small amounts)<br>3891 Moncton Street | 604-274-3865 |

List of locations: [tsbc.ca/bike.php](http://tsbc.ca/bike.php) or 1-866-759-0488.



### TOOLS - POWER (ELECTRONIC & ELECTRICAL)

| DROP-OFF LOCATION  | PHONE          |
|--|----------------|
| Richmond Recycling Depot<br>5555 Lynas Lane                  | 604-276-4010   |
| Ironwood Bottle & Return-It Depot<br>110-11020 Horseshoe Way | 604-275-0585   |
| OK Bottle Depot<br>145-5751 Cedarbridge Way                  | 604-244-0008   |
| Regional Recycling<br>13300 Vulcan Way                       | 1-855-701-7171 |




### TOYS (ELECTRONIC & ELECTRICAL) INCLUDING VIDEO GAMING SYSTEMS & ACCESSORIES

| DROP-OFF LOCATION  | PHONE          |
|--|----------------|
| Richmond Recycling Depot<br>5555 Lynas Lane                  | 604-276-4010   |
| Best Buy Lansdowne Centre<br>700-5300 No. 3 Road             | 1-866-237-8289 |
| Ironwood Bottle & Return-It Depot<br>110-11020 Horseshoe Way | 604-275-0585   |
| OK Bottle Depot<br>145-5751 Cedarbridge Way                  | 604-244-0008   |
| Regional Recycling<br>13300 Vulcan Way                       | 1-855-701-7171 |



### UPHOLSTERED FURNITURE (COUCHES, ARMCHAIRS, ETC)

| DROP-OFF LOCATION   | PHONE        |
|---|--------------|
| Richmond Recycling Depot<br>5555 Lynas Lane   | 604-276-4010 |
|  City of Vancouver Landfill<br>5400 72nd Street, Delta | 604-873-7000 |

Richmond's Large Item Pick Up Program: Contact Sierra Waste at 604-270-4722. Some restrictions apply. Program details: [richmond.ca/largeitem](http://richmond.ca/largeitem).



Our thanks go to  
Richmond residents who  
have helped us divert the  
majority of our household  
waste from the landfill  
through consistent  
recycling as well as their  
continued efforts to  
reduce waste.

Together, we are making  
continuous improvements  
that support a circular  
economy and more  
sustainable waste  
management.



## **CITY OF RICHMOND**

Environmental Programs Information Line:  
604-276-4010

[richmond.ca/recycle](http://richmond.ca/recycle)



Printed on Rolland Enviro Print, which contains 100% post-consumer recycled fibre, is FSC Certified and is acid- and elemental chlorine-free.