

DROP-OFF OPTIONS FOR ADDITIONAL HOUSEHOLD ITEMS

In addition to the Large Item Pick-up Program, there are a number of drop-off options for additional household items.

Richmond Recycling Depot

5555 Lynas Lane
Wednesday to Sunday, 9:00 a.m. to 6:15 p.m.

Many household items can be recycled at the Recycling Depot, including exercise and hobby machines, electric power tools, large and small appliances, large metal items such as bike frames and lighting and lighting fixtures. For a full list of items accepted at the Recycling Depot visit www.richmond.ca/recycle.

Vancouver Landfill – Disposal Vouchers

Richmond residents may purchase a \$5 Garbage Disposal Voucher, which has a value of \$20 at the Vancouver Landfill. Vouchers are available for sale at all City facilities and there is a limit of one per household per year.

Product Stewardship Programs

A number of large household items are also accepted for drop off as part of take-back programs operated by local retailers for recycling and/or safe disposal. This includes common household and automotive products such as mattresses, electronics, car batteries, tires and paint. For a list of products and drop-off locations visit www.metrovancouverrecycles.org or call 604-732-9253.

LARGE ITEM PICK UP PROGRAM GUIDE



LET'S RECYCLE WITH THE LARGE ITEM PICK UP PROGRAM!

Let's trim our waste!

Curbside collection for large household items.

www.richmond.ca/recycle



CURBSIDE COLLECTION FOR LARGE HOUSEHOLD ITEMS

Richmond's Large Item Pick Up program provides a convenient curbside collection service for up to four large household items per year, including mattresses, furniture and appliances. This new service is available to single-family homes and townhomes with City garbage collection and/or Blue Box recycling service.

This program is designed to make it more convenient for residents to dispose of large household items and to help reduce illegal dumping. As well, through this program, large household items that can be recycled will be diverted from the landfill, which will help Richmond achieve its goal for 70% waste diversion from the landfill by 2015.

See inside for more details on how the program works.

WHAT'S ACCEPTED AND NOT ACCEPTED?



ACCEPTED

- ✓ Furniture (couches, coffee tables, chair, desk, dresser, TV stand, cabinet, drawers, table, hutch, crib, high chair, entertainment center)
- ✓ Appliances (stoves, dishwashers, washer and/or dryer, hot water tanks, refrigerators, freezers, microwaves)
- ✓ Electric lawnmowers
- ✓ Small household goods, provided they are boxed or bundled and are a reasonable size (one box or bundle is equal to one of the resident's four allotted items)
- ✓ Barbecues (remove lava rock briquettes and/or propane tank)
- ✓ Mattresses (including headboard & frame)
- ✓ Outdoor furniture (chairs, patio table, patio umbrellas)
- ✓ Weight training equipment (treadmill, elliptical, stationary bike, stair master, weight set)

Note: The item(s) must be able to be safely handled from curbside in order to qualify for collection. For safe handling of mattresses, please ensure the mattress stays dry and mould-free by covering in a plastic bag. Reuse the bag from newly-purchased mattresses or purchase bags from home hardware and supply stores. Mattresses not wrapped in plastic will not be picked up.

NOT ACCEPTED

- ✗ Car bodies or parts
- ✗ Carpets
- ✗ Gas lawnmowers
- ✗ Hazardous waste
- ✗ Lumber
- ✗ Demolition (drywall)
- ✗ Home renovation (sinks, flooring, doors, windows)
- ✗ Propane tanks
- ✗ Tires
- ✗ Tree stumps

Please call 604-732-9253 for drop-off locations.

CITY OF RICHMOND

Environmental Programs Information Line:
604-276-4010
www.richmond.ca/recycle

LARGE ITEM PROGRAM STEPS AND PICK UP OPTIONS

STEPS ON HOW THE PROGRAM WORKS:

- 1** To schedule collection of up to four items per year, residents can contact the City's service provider, Sierra Waste Services Ltd Customer Service at 604-270-4722 or schedule online at www.richmond.ca/recycle.
- 2** Sierra Waste Services will contact you to provide a pick-up date and confirmation number.
- 3** On your scheduled pick-up date only, place booked items at the curb before 7:30 a.m. or no earlier than 8:00 p.m. the night before.



TIPS ON HOW THE PROGRAM WORKS:



COLLECTION LIMIT

The collection limit is four large items per year – there is no carry forward if residents do not use the service in a given year.



HOW TO ARRANGE COLLECTION

Large items will be picked up on the same day as garbage/recycling. Residents must make arrangements for pick up by 5:00 p.m. on the Thursday prior to the following week's collection day.



SAFETY CONSIDERATIONS

If the large item is a freezer, refrigerator, icebox or other container that is equipped with a latch or locking device, the door/latch must be removed and placed beside the large item for safety reasons.



PREPARING FOR PICK UP

To help keep our neighbourhoods tidy, residents must remove any large items that were not collected by 9:00 p.m. on their scheduled collection day. Large items will not be collected if:

- Tagged as being inappropriate or unacceptable, or
- Not scheduled for pick-up by 5:00 p.m. on the Thursday prior to the collection day. Call 604-270-4722 to confirm the next collection day option.

MULTIPLE PICK UP OPTIONS:

OPTION 1

1 ITEM PICKED UP 4 SEPARATE TIMES

FIRST PICK UP: 1 ITEM



SECOND PICK UP: 1 ITEM



THIRD PICK UP: 1 ITEM



FOURTH PICK UP: 1 ITEM



OPTION 2

2 ITEMS PICKED UP 2 SEPARATE TIMES

FIRST PICK UP: 2 ITEMS



SECOND PICK UP: 2 ITEMS



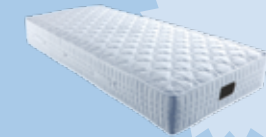
OPTION 3

3 ITEMS PICKED UP AT 1 TIME & 1 ITEM PICKED UP ANOTHER TIME

FIRST PICK UP: 3 ITEMS



SECOND PICK UP: 1 ITEM



OPTION 4

4 ITEMS PICKED UP ALL AT ONCE

FIRST PICK UP: ALL 4 ITEMS

