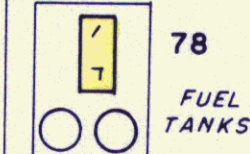
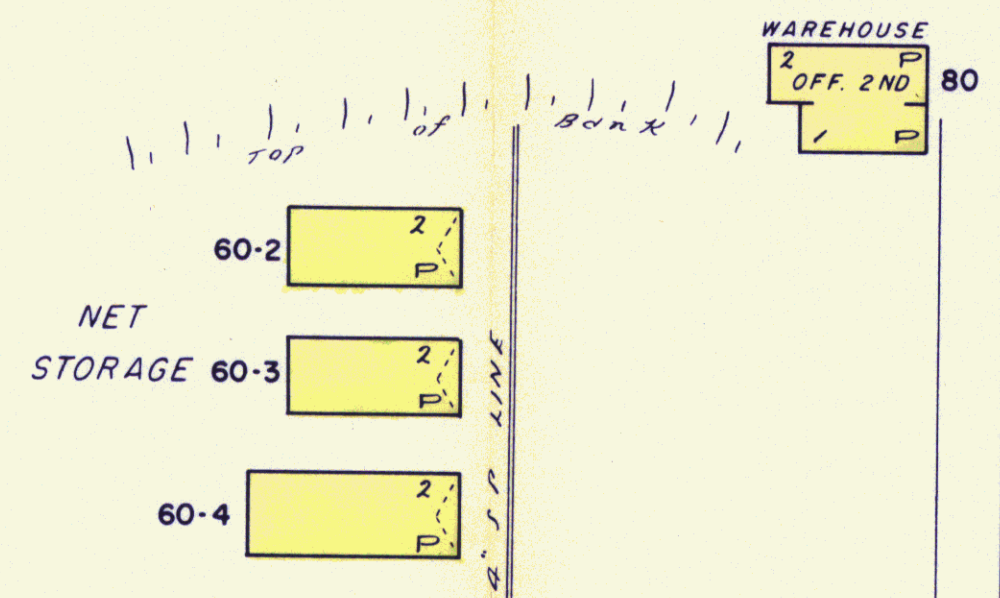
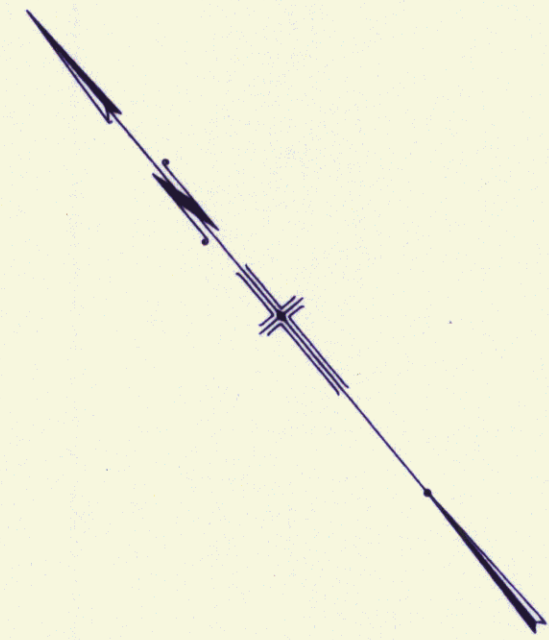
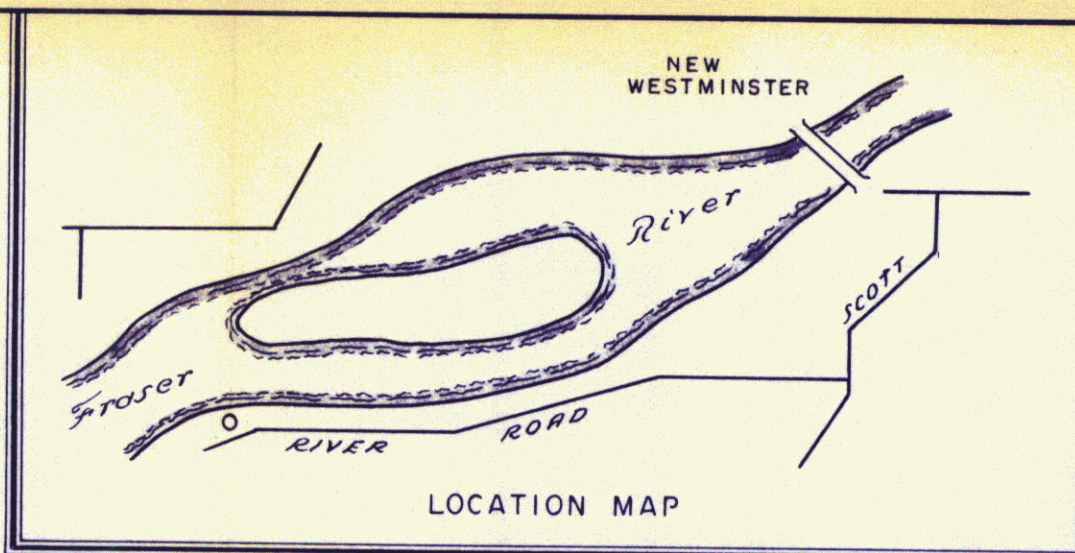
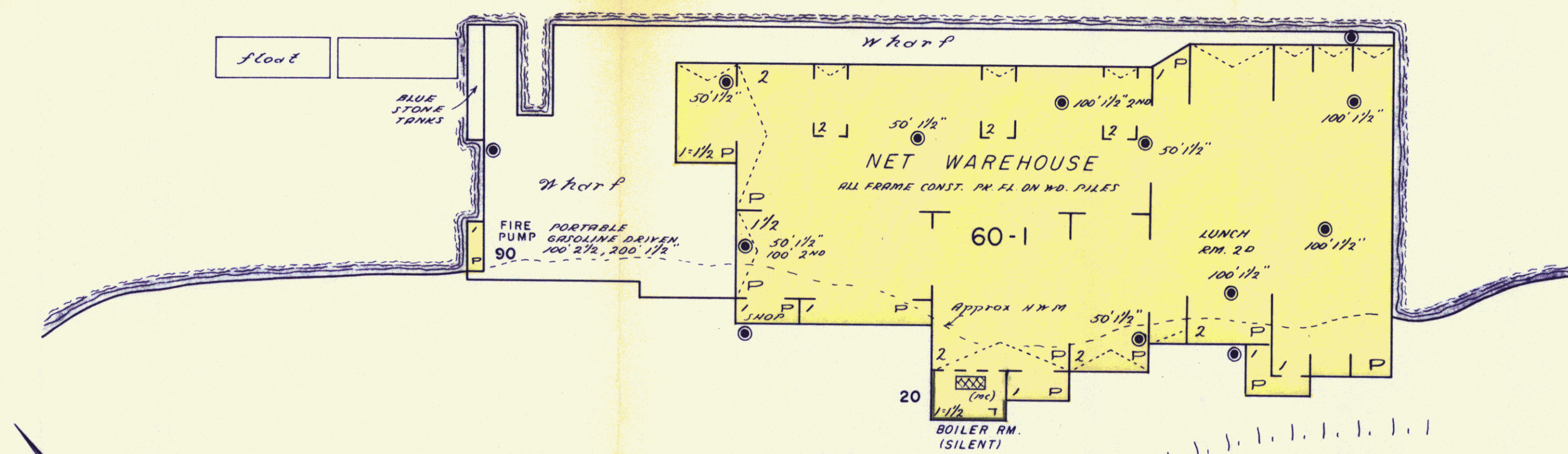


Fraser River



RIVER ROAD 10" 10" FIRE HALL 2 MILES DISTANT

ST MUNGO CANNERY  
 NELSON BROS. FISHERIES LIMITED  
 DELTA, B. C.



PREPARED BY  
**REED, SHAW & Mc NAUGHT**  
 INSURANCE SERVICE  
 VANCOUVER CALGARY EDMONTON REGINA  
 WINNIPEG TORONTO MONTREAL

SCALE 1 IN. = 50 FT. SEPTEMBER 1967.